

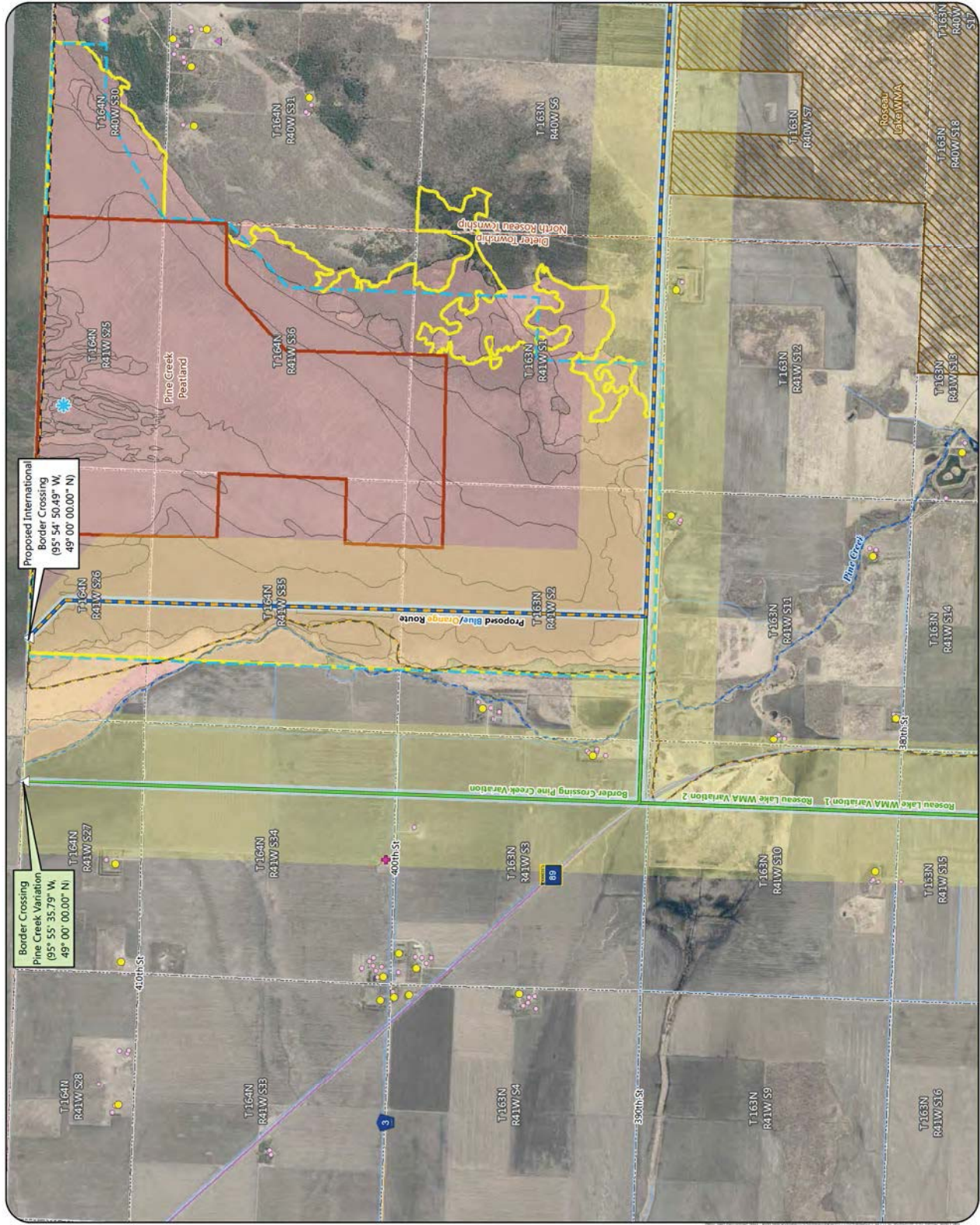


- Border Crossing Point
- Proposed Routes**
- Blue/Orange Route
- Alternatives**
- Route Variation
- Anticipated Right-of-Way
- Anticipated Route Width
- Residences
- Commercial or Non-Residential Structure
- Cemetery
- Approximate Calcareous Fen Location
- Aggregate Source Location
- NHD Watercourse
- PWI Watercourse
- Wildlife Management Area (WMA)
- Scientific and Natural Area (SNA)
- Preliminary Peatland SNA Watershed Protection Area
- High Conservation Value Forest
- Native Plant Community (Data only available for Rosseau County)
- Snowmobile Trail
- Civil Township
- Public Land Survey Section
- County Boundary
- International Boundary



Appendix S - Map 1

**MAP BOOK - WEST SECTION**  
Great Northern Transmission Line  
Final Environmental Impact Statement





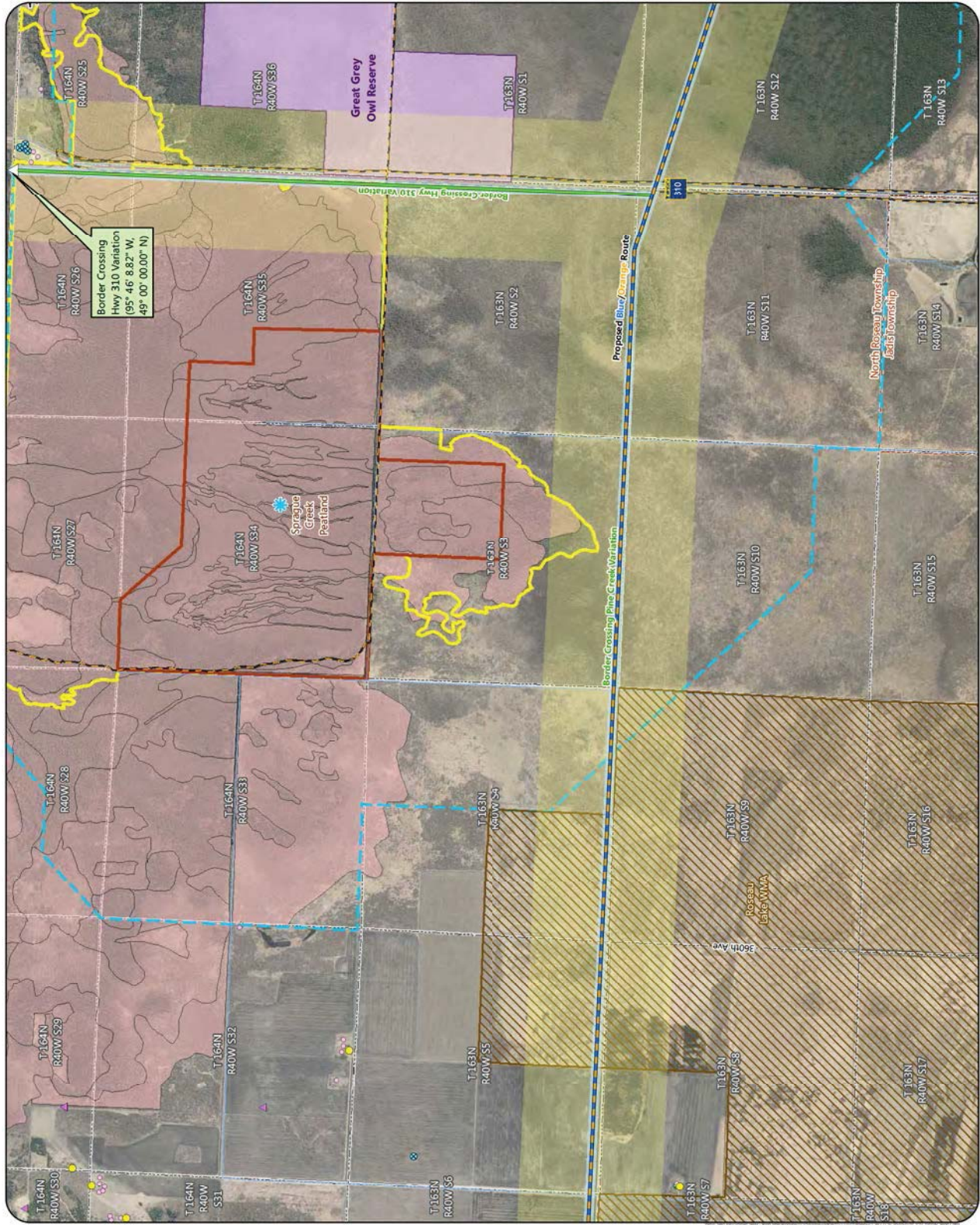


- △ Border Crossing Point
- Proposed Routes**
- Blue/Orange Route
- Alternatives**
- Route Variation
- Anticipated Right-of-Way
- Anticipated Route Width
- Residences
- Commercial or Non-Residential Structure
- Approximate Calcareous Fen Location
- Airstrip
- Aggregate Source Location
- County Well Index
- NHD Watercourse
- Wildlife Management Area (WMA)
- Great Grey Owl Reserve
- Scientific and Natural Area (SNA)
- Preliminary Peatland SNA Watershed Protection Area
- High Conservation Value Forest
- Native Plant Community (Data only available for Rosseau County)
- Snowmobile Trail
- Civil Township
- Public Land Survey Section
- County Boundary
- International Boundary
- MPCA Database
- Tanks and Leaks



Appendix S - Map 2

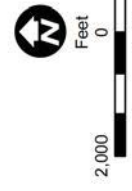
**MAP BOOK - WEST SECTION**  
Great Northern Transmission Line  
Final Environmental Impact Statement







- Proposed Routes**
- Blue/Orange Route
- Alternatives**
- Route Variation
  - Anticipated Right-of-Way
  - Anticipated Route Width
- Residences**
- Commercial or Non-Residential Structure
  - NHD Watercourse
  - PWI Watercourse
  - MPCA Impaired Stream
  - Great Grey Owl Reserve
  - Preliminary Peatland SNA Watershed Protection Area
  - Snowmobile Trail
  - Public Land Survey Section



Appendix S - Map 3

**MAP BOOK - WEST SECTION**  
Great Northern Transmission Line  
Final Environmental Impact Statement







**Proposed Routes**

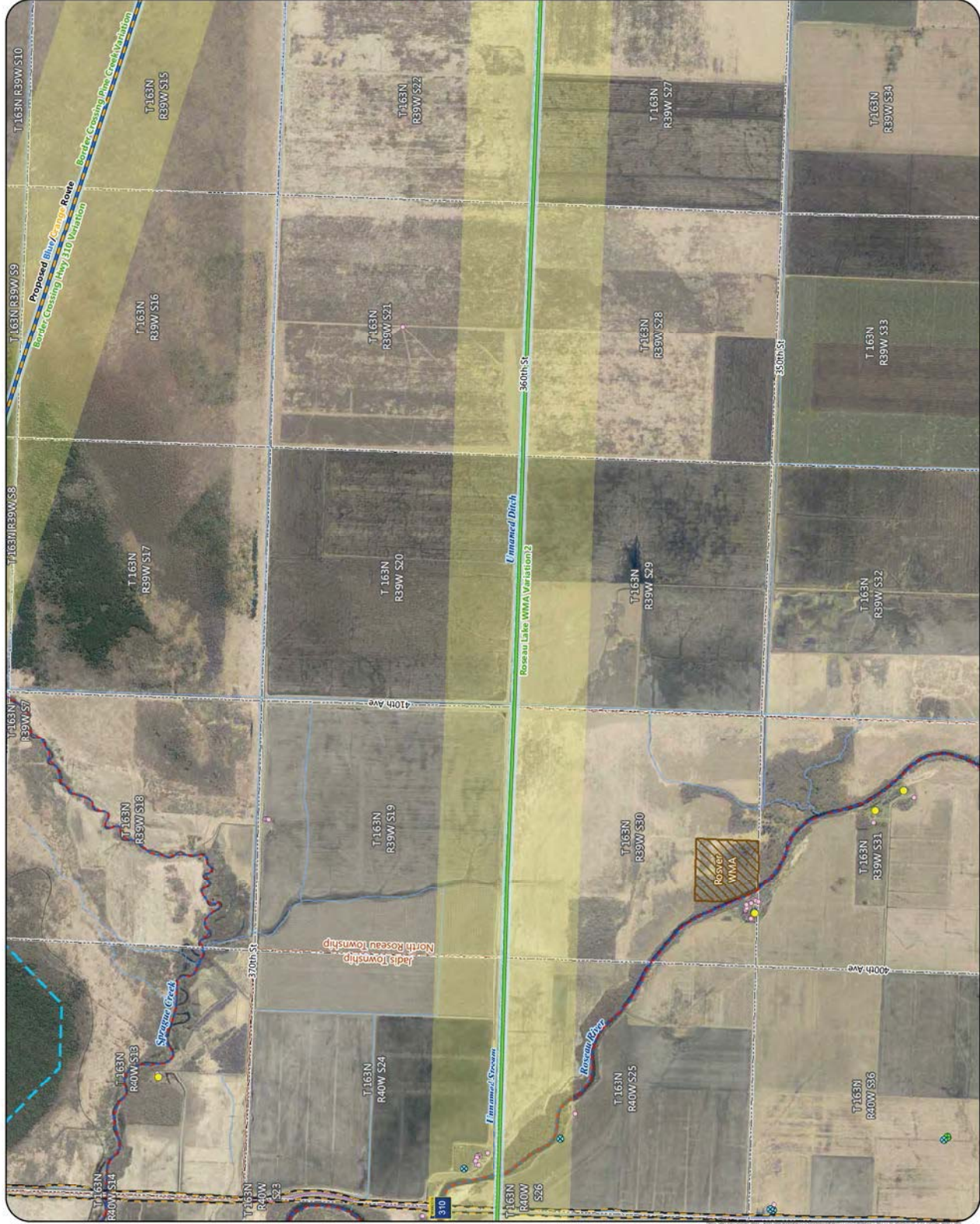
- Blue/Orange Route
- Alternatives**
- Route Variation
- Anticipated Right-of-Way
- Anticipated Route Width
- Residences
- Commercial or Non-Residential Structure
- County Well Index
- Mineral Exploration or Engineering Drillhole
- NHD Watercourse
- PWI Watercourse
- MPCA Impaired Stream
- Wildlife Management Area (WMA)
- Preliminary Peatland SNA Watershed Protection Area
- Snowmobile Trail
- Civil Township
- Public Land Survey Section



Appendix S - Map 19

**MAP BOOK - WEST SECTION**

Great Northern Transmission Line  
Final Environmental Impact Statement







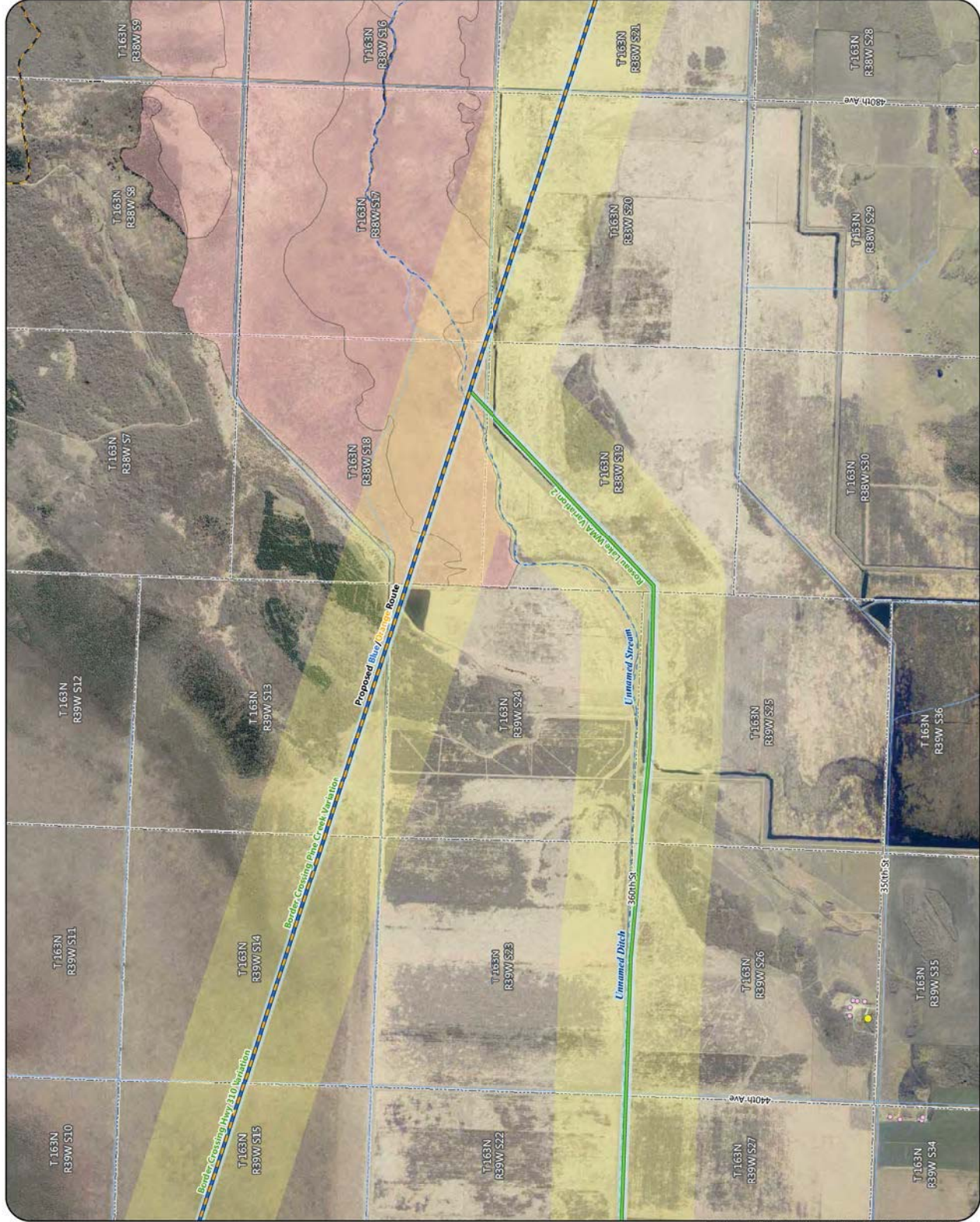
**Proposed Routes**

- Blue/Orange Route
- Alternatives**
- Route Variation
- Anticipated Right-of-Way
- Anticipated Route Width
- Residences
- Commercial or Non-Residential Structure
- NHD Watercourse
- PWI Watercourse
- Native Plant Community (Data only available for Rosseau County)
- Snowmobile Trail
- Public Land Survey Section



Appendix S - Map 4

**MAP BOOK - WEST SECTION**  
Great Northern Transmission Line  
Final Environmental Impact Statement





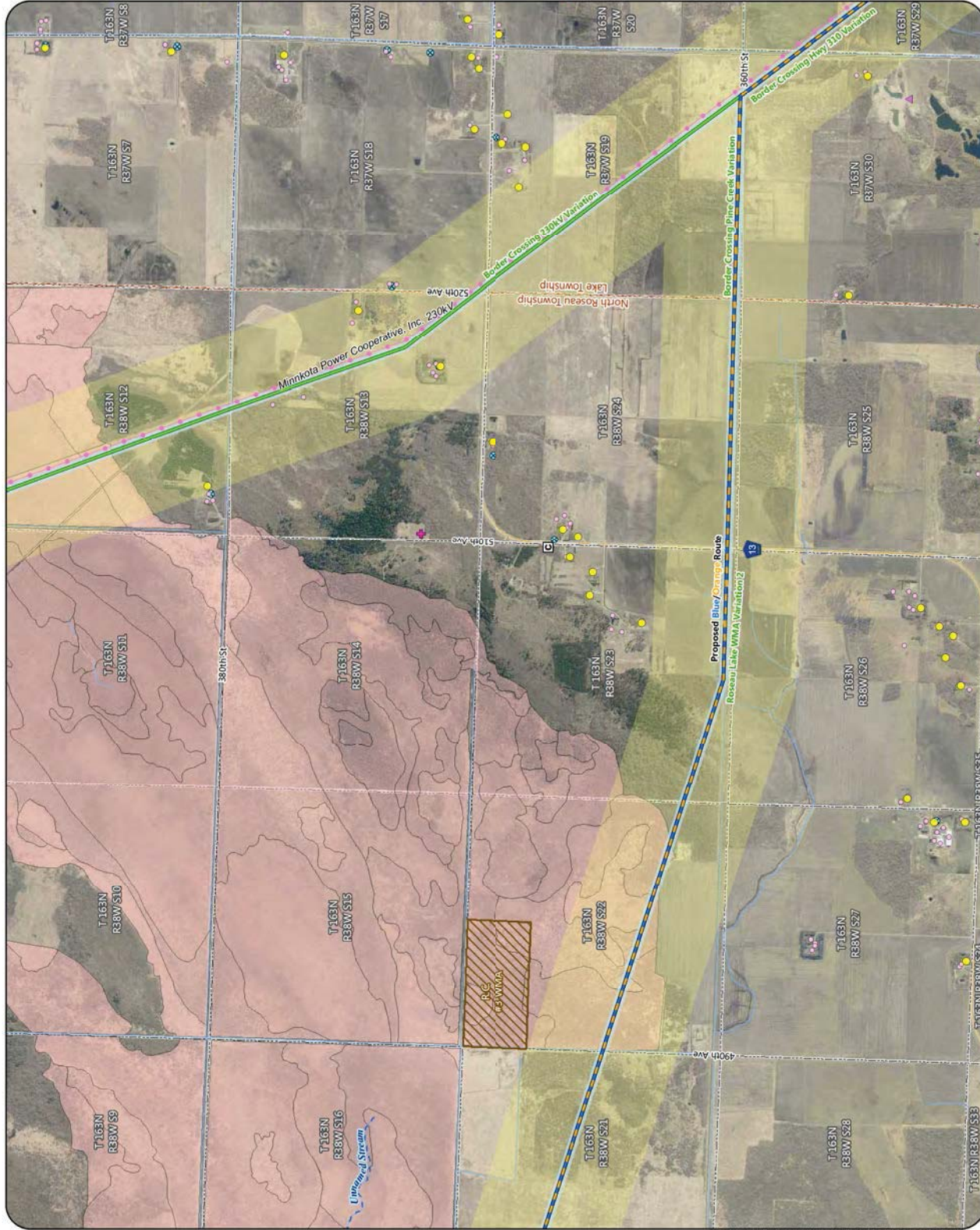


- Proposed Routes**
- Blue/Orange Route
- Alternatives**
- Route Variation
  - Anticipated Right-of-Way
  - Anticipated Route Width
- Residences**
- Commercial or Non-Residential Structure
  - Church
  - Cemetery
  - Aggregate Source Location
  - County Well Index
  - NHD Watercourse
  - PWI Watercourse
  - Wildlife Management Area (WMA)
  - Native Plant Community (Data only available for Roseau County)
  - Civil Township
  - Public Land Survey Section
- Existing Transmission Lines**
- 230 KV



Appendix S - Map 5

**MAP BOOK - WEST SECTION**  
Great Northern Transmission Line  
Final Environmental Impact Statement







**Proposed Routes**

Blue/Orange Route

**Alternatives**

Route Variation

Anticipated Right-of-Way

Anticipated Route Width

Residences

Commercial or Non-Residential Structure

Aggregate Source Location

County Well Index

NHD Watercourse

Native Plant Community (Data only available for Roseau County)

Scenic Byway

Civil Township

Public Land Survey Section

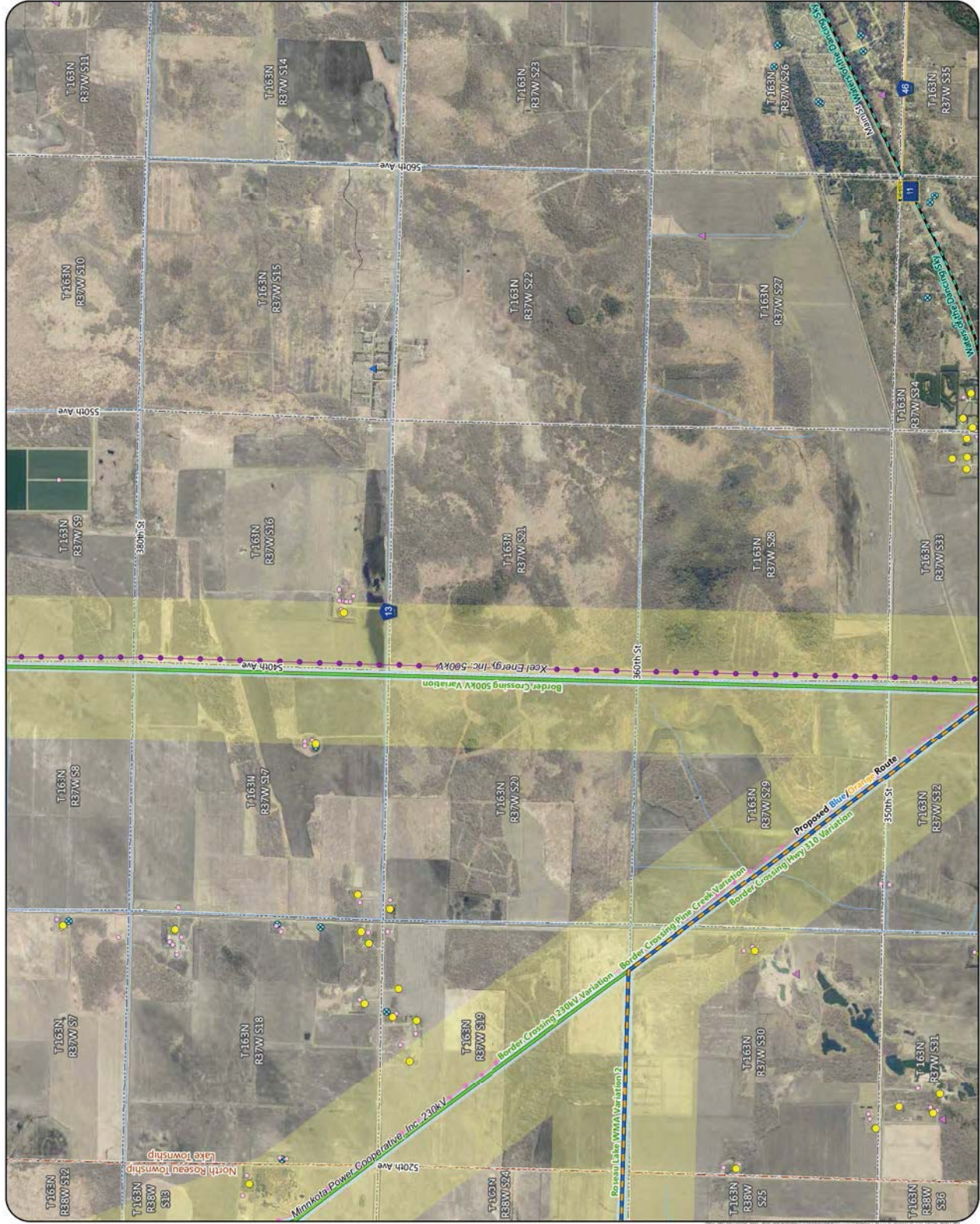
**MPCA Database**

Tanks and Leaks

**Existing Transmission Lines**

230 KV

500 KV



Appendix S - Map 6







**Proposed Routes**

Blue/Orange Route

**Alternatives**

Route Variation

Anticipated Right-of-Way

Visual Simulation Viewpoint

Residences

Commercial or Non-Residential Structure

Aggregate Source Location

Communication Tower

County Well Index

Mineral Exploration or Engineering Drillhole

NHD Watercourse

PWI Watercourse

Wildlife Management Area (WMA)

Native Plant Community (Data only available for Rosseau County)

Scenic Byway

Snowmobile Trail

Civil Township

Public Land Survey Section

**MPCA Database**

Hazardous Waste

Tanks and Leaks

Existing Transmission Lines

230 KV

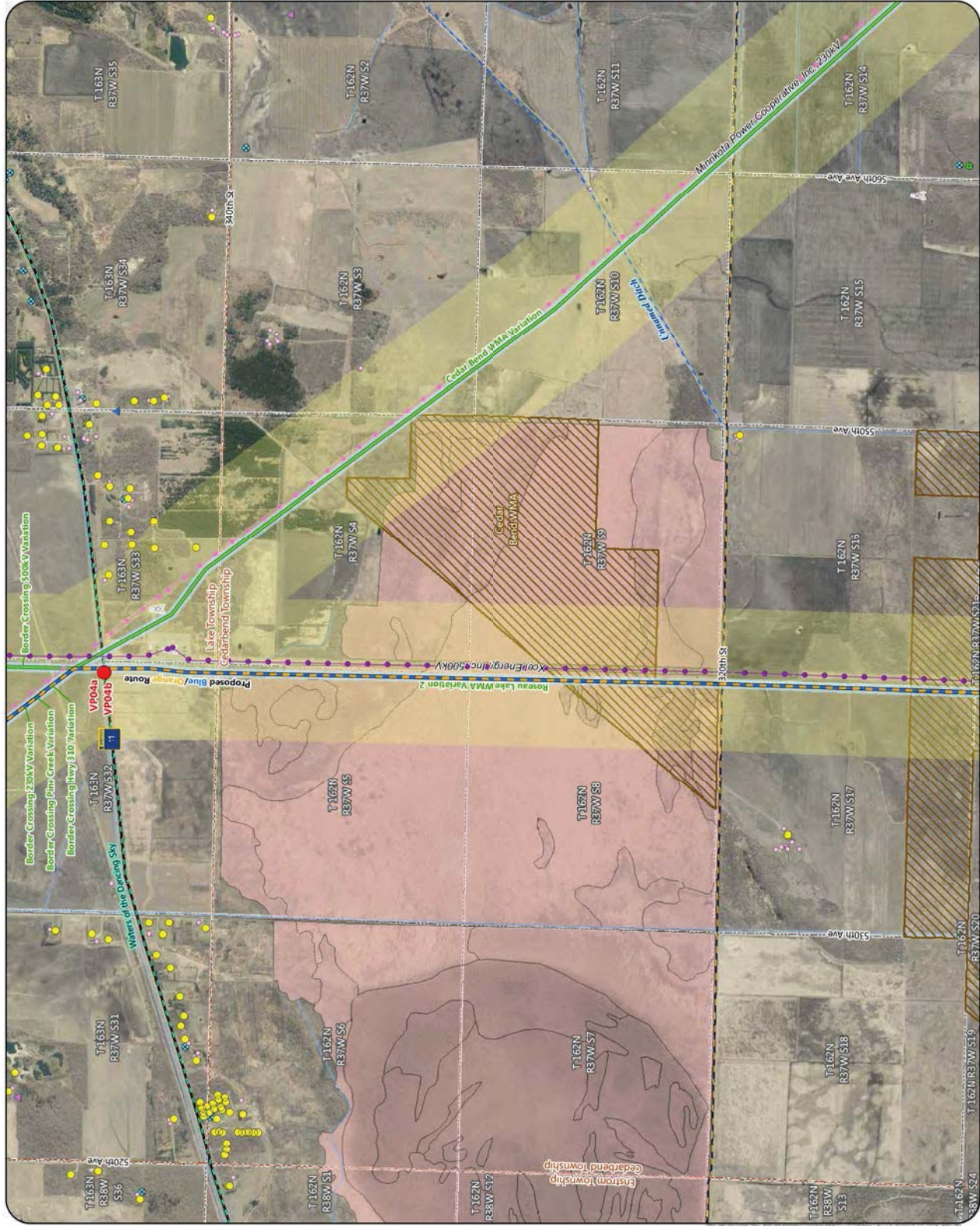
500 KV



Appendix S - Map 7

**MAP BOOK - WEST SECTION**

Great Northern Transmission Line  
Final Environmental Impact Statement





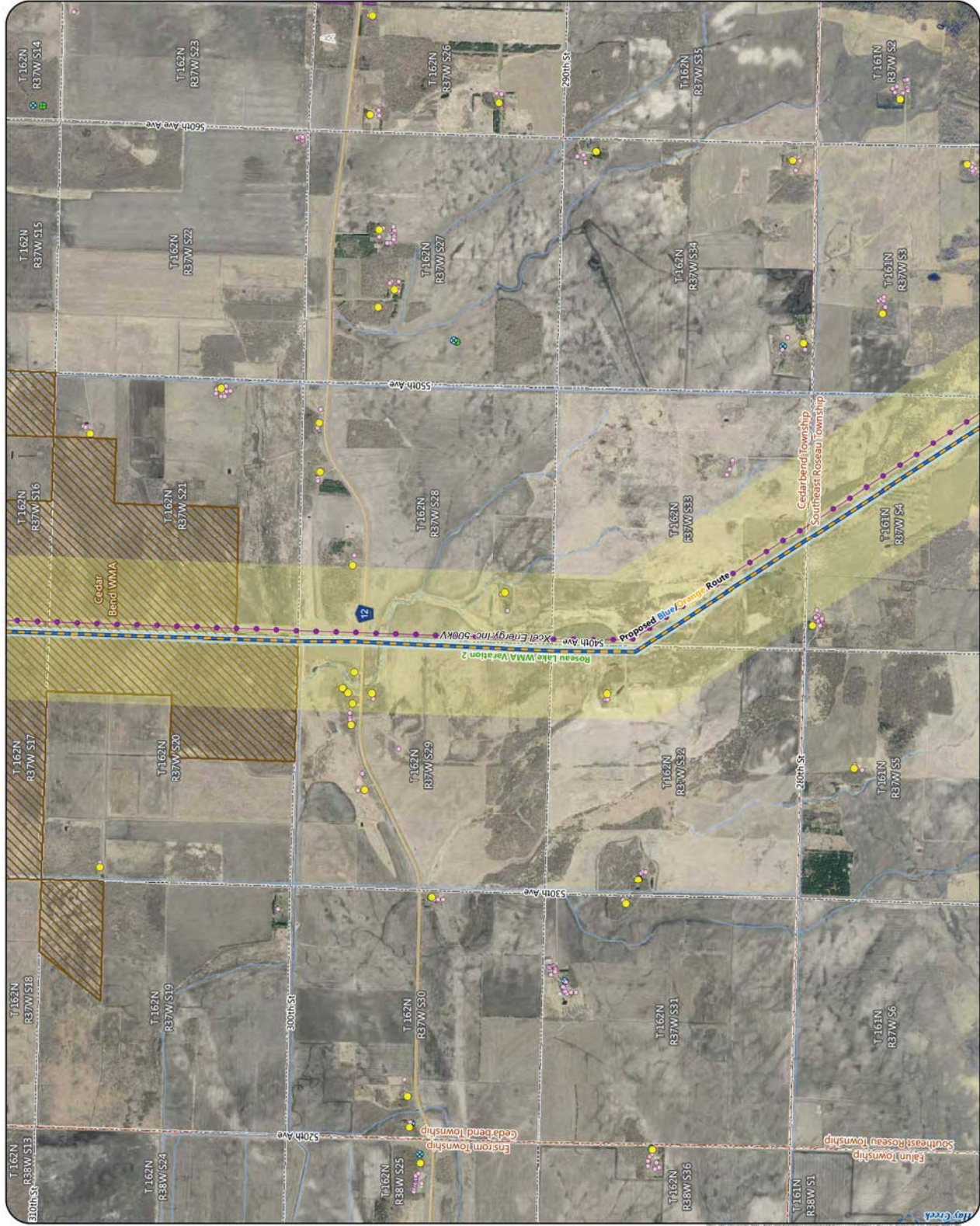


- Proposed Routes**
- Blue/Orange Route
- Alternatives**
- Route Variation
  - Anticipated Right-of-Way
  - Anticipated Route Width
- Residences**
- Commercial or Non-Residential Structure
  - Communication Tower
  - County Well Index
  - Mineral Exploration or Engineering Drillhole
  - NHD Watercourse
  - PWI Watercourse
  - Wildlife Management Area (WMA)
  - USFWS Interest Lands
  - Civil Township
  - Public Land Survey Section
- Existing Transmission Lines**
- 500 KV



Appendix S - Map 8

**MAP BOOK - WEST SECTION**  
Great Northern Transmission Line  
Final Environmental Impact Statement







**Proposed Routes**

Blue/Orange Route

**Alternatives**

Route Variation

Anticipated Right-of-Way

Anticipated Route Width

Residences

Commercial or Non-Residential Structure

Cemetery

Airstrip

County Well Index

Mineral Exploration or Engineering Drillhole

NHD Watercourse

PWI Watercourse

MPCA Impaired Stream

Trout Stream

PWI Waterbody

Shallow Lake

High Conservation Value Forest

Native Plant Community (Data only available for Roseau County)

USFWS Interest Lands

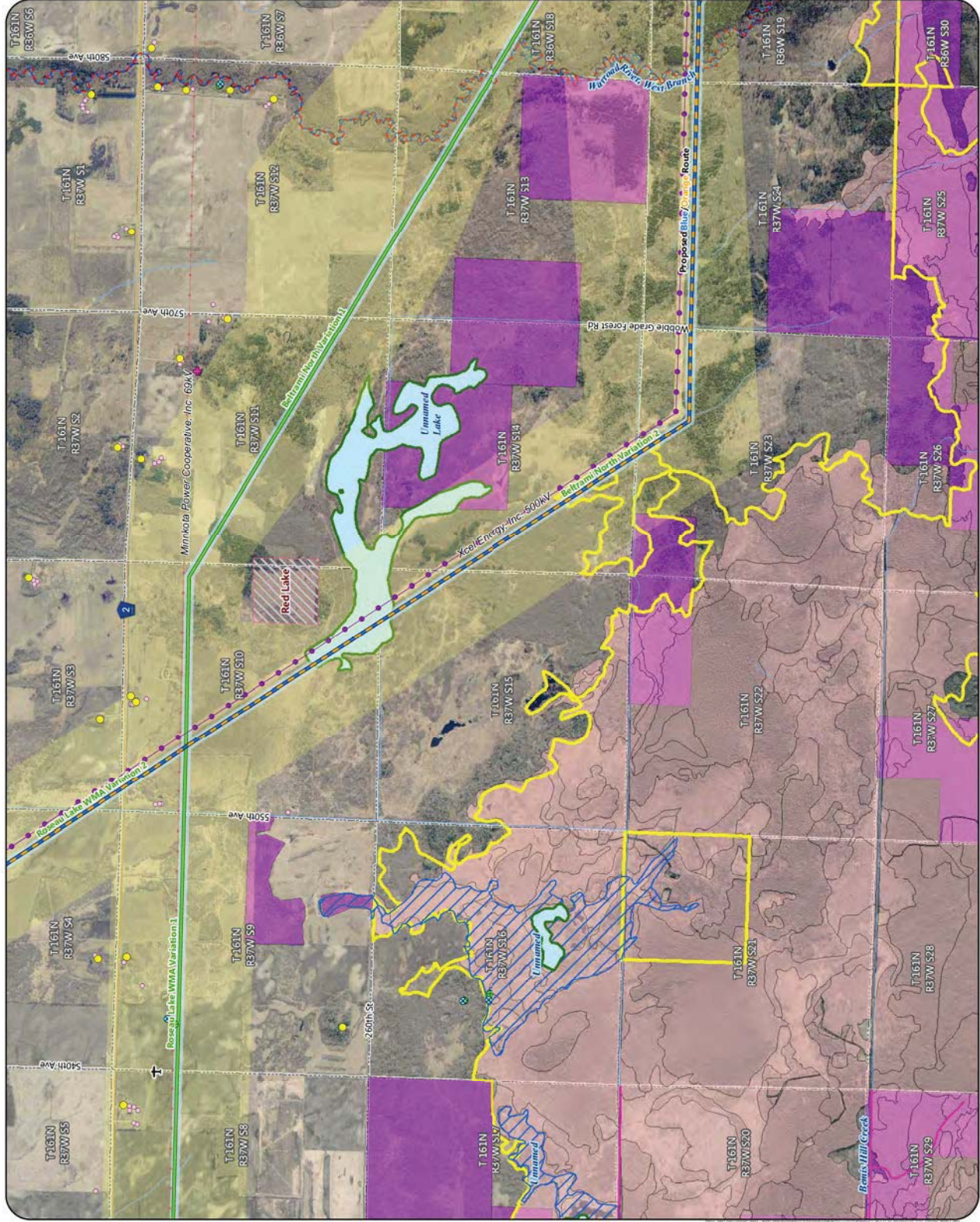
Indian Reservation Land

Public Land Survey Section

**Existing Transmission Lines**

69 or 115 KV

500 KV



Appendix S - Map 9

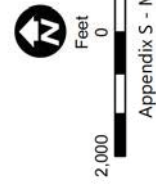
**MAP BOOK - WEST SECTION**  
Great Northern Transmission Line  
Final Environmental Impact Statement





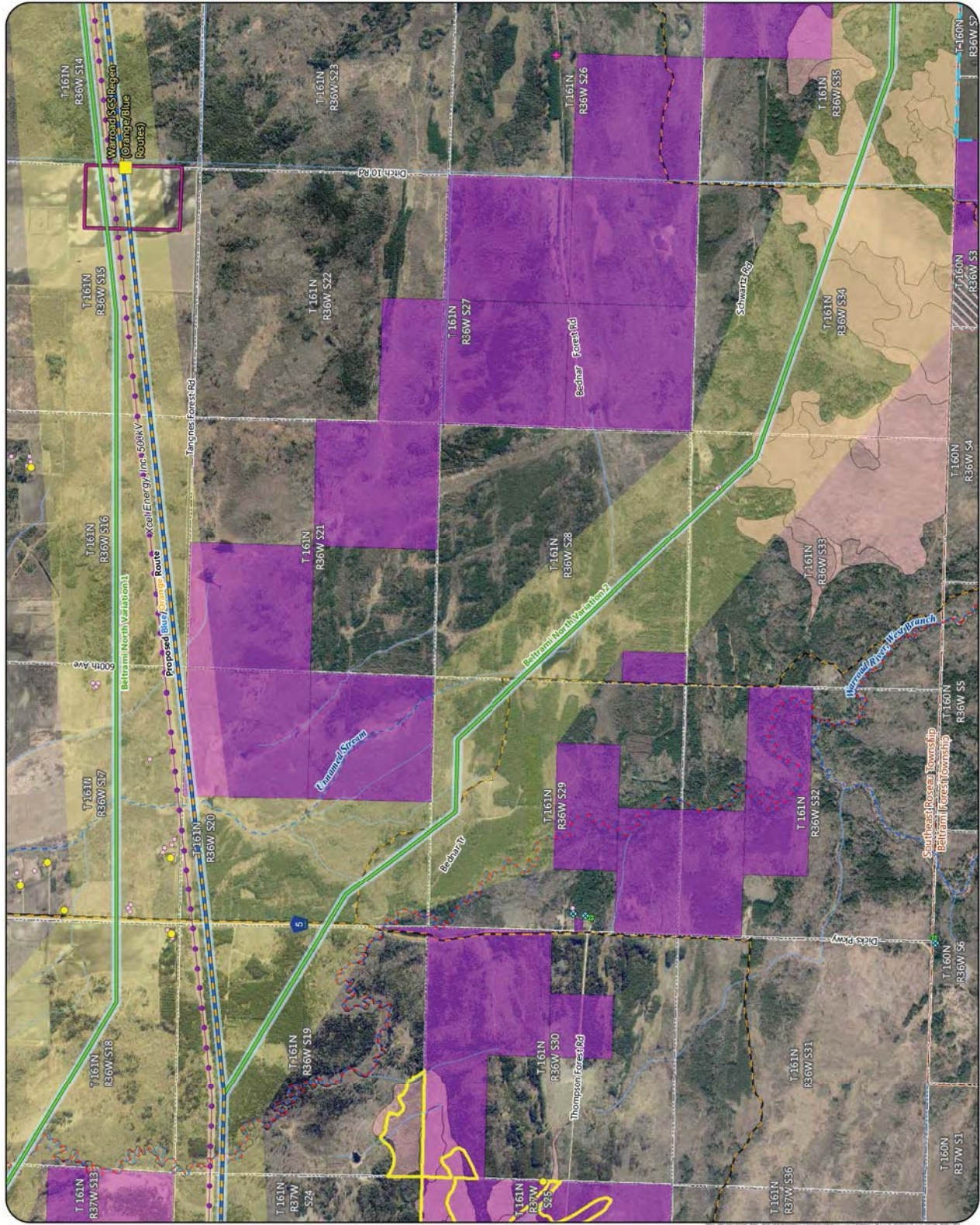


- Proposed Regeneration Site
- Proposed Routes
- Blue/Orange Route
- Alternatives**
- Route Variation
- Anticipated Right-of-Way
- Anticipated Route Width
- Proposed Series Compensation Station
- Residences
- + Commercial or Non-Residential Structure
- + Cemetery
- + County Well Index
- + Mineral Exploration or Engineering Drillhole
- NHD Watercourse
- PWI Watercourse
- MPCA Impaired Stream
- Preliminary Peatland SNA Watershed Protection Area
- High Conservation Value Forest
- Native Plant Community (Data only available for Rosseau County)
- USFWS Interest Lands
- Indian Reservation Land
- Snowmobile Trail
- Civil Township
- Public Land Survey Section
- Existing Transmission Lines**
- 500 KV



Appendix S - Map 10

**MAP BOOK - WEST SECTION**  
Great Northern Transmission Line  
Final Environmental Impact Statement







**Proposed Routes**

Blue/Orange Route

**Alternatives**

Route Variation

Anticipated Right-of-Way

Anticipated Route Width

Residences

Commercial or Non-Residential Structure

NHD Watercourse

PWI Watercourse

MPCA Impaired Stream

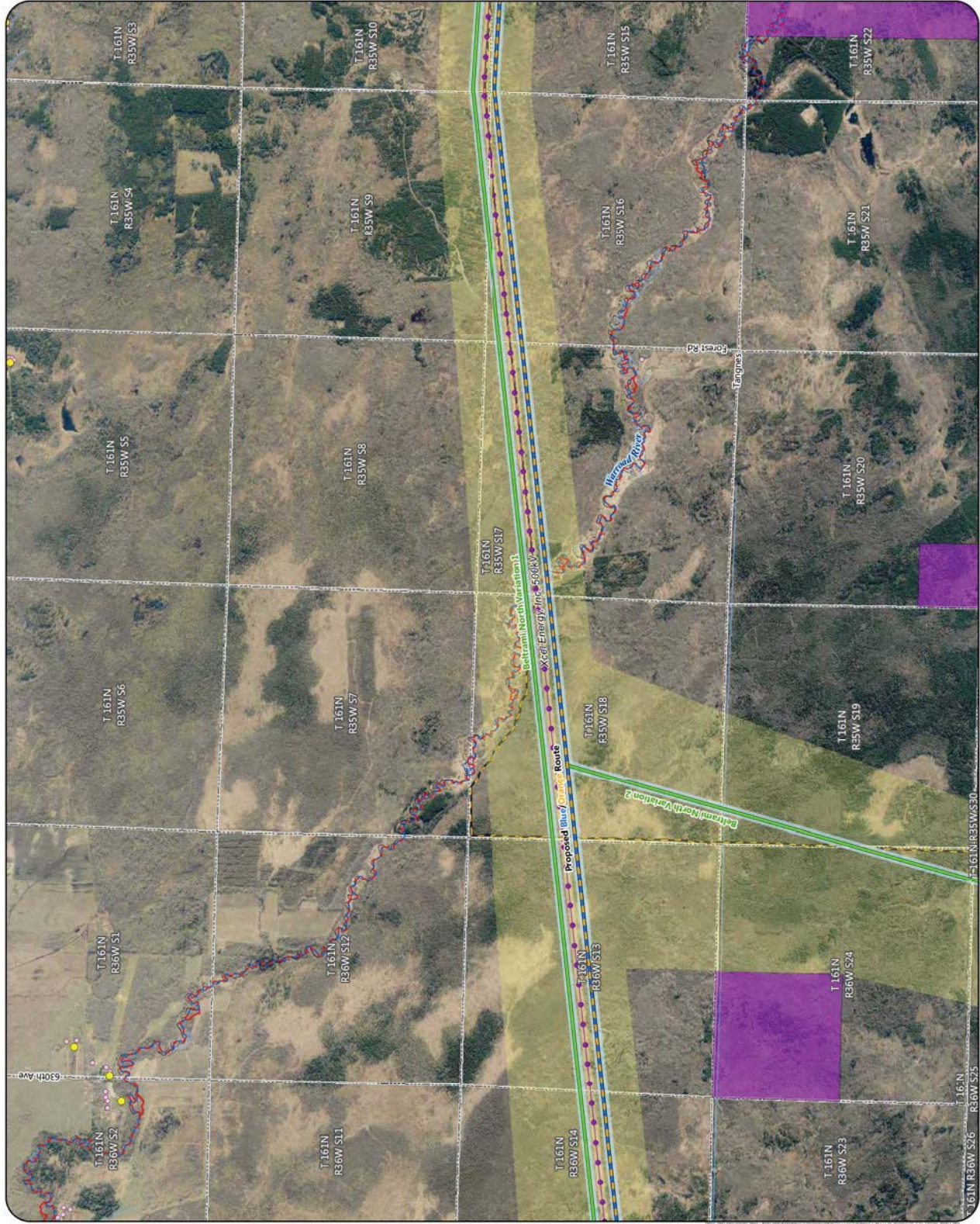
USFWS Interest Lands

Snowmobile Trail

Public Land Survey Section

**Existing Transmission Lines**

500 KV



Appendix S - Map 11





**Proposed Routes**

Blue/Orange Route

Alternatives

Route Variation

Route Variation Hop

Anticipated Right-of-Way

Anticipated Route Width

Residences

Commercial or Non-Residential Structure

Aggregate Source Location

NHD Watercourse

PWI Watercourse

MPCA Impaired Stream

NHD Waterbody

PWI Waterbody

USFWS Interest Lands

Snowmobile Trail

Civil Township

Public Land Survey Section

Existing Transmission Lines

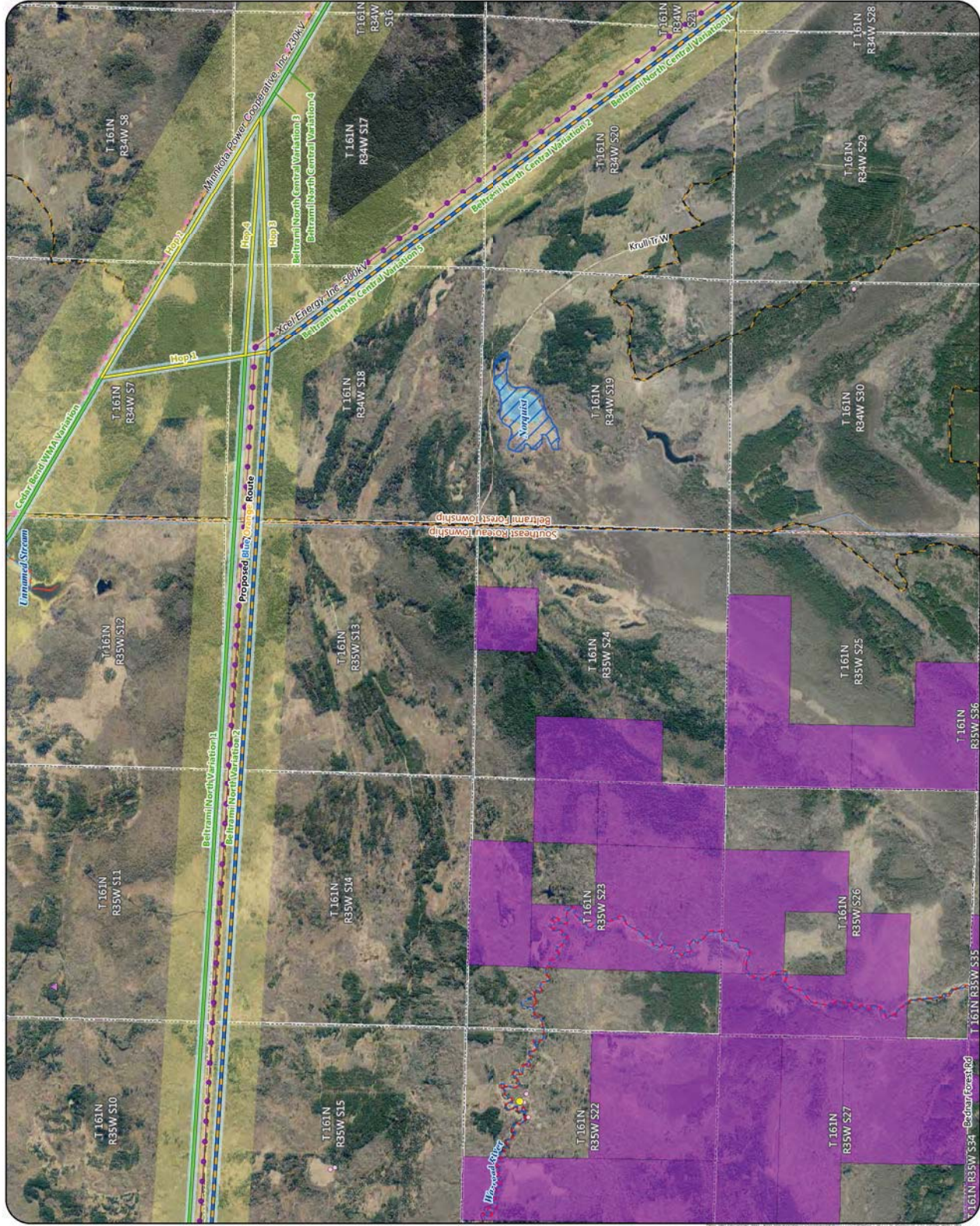
230 KV

500 KV



Appendix S - Map 12

**MAP BOOK - WEST SECTION**  
Great Northern Transmission Line  
Final Environmental Impact Statement







**Proposed Routes**

Blue/Orange Route

**Alternatives**

Route Variation

Anticipated Right-of-Way

Residences

Commercial or Non-Residential Structure

Cemetery

County Well Index

NHD Watercourse

PWI Watercourse

Indian Reservation Land

Scenic Byway

Snowmobile Trail

Municipal Boundary

Civil Township

Public Land Survey Section

**MPCA Database**

Hazardous Waste

Investigation and Cleanup

Tanks and Leaks

Multiple Activities

**Existing Transmission Lines**

230 KV

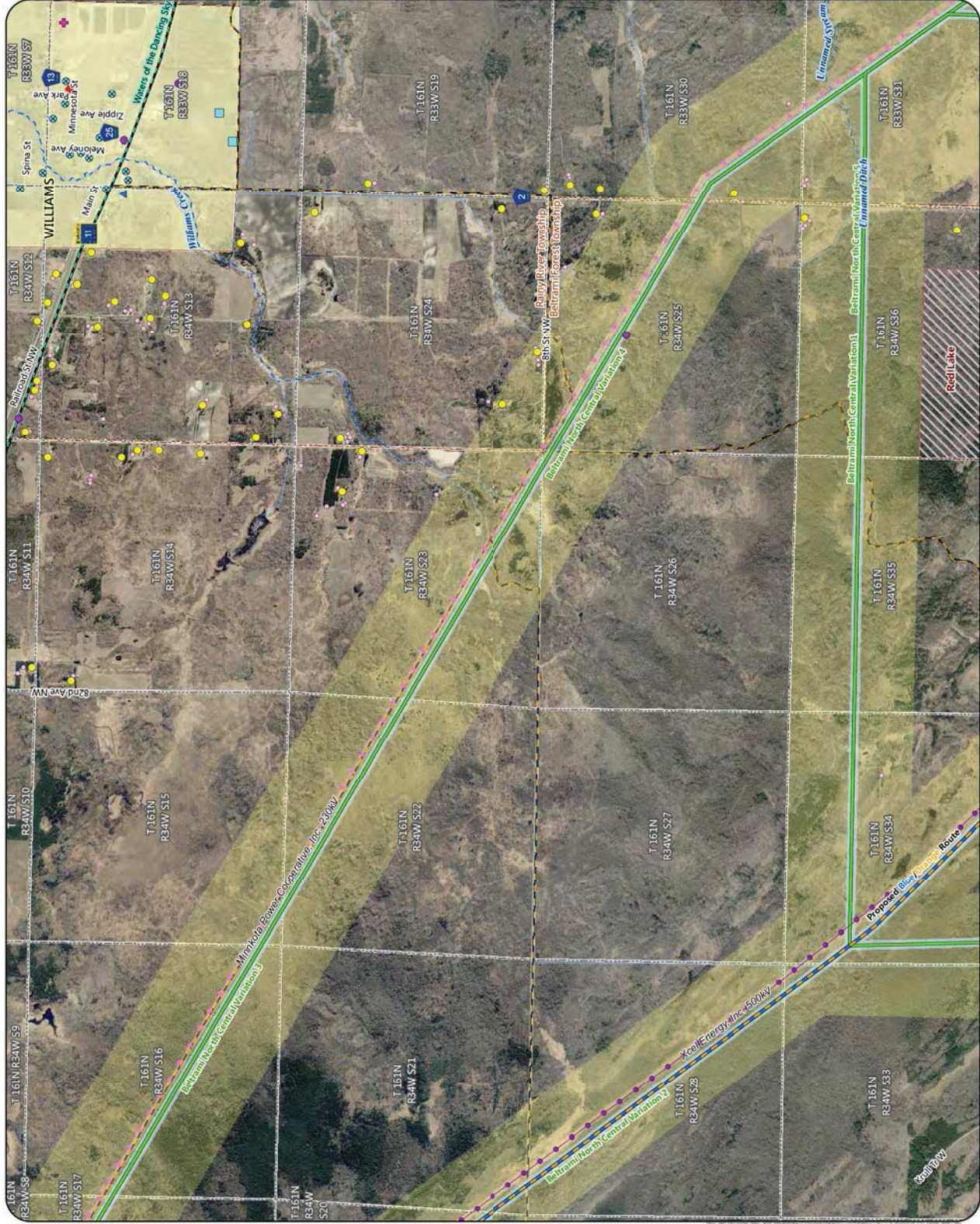
500 KV



Appendix S - Map 13

**MAP BOOK - WEST SECTION**

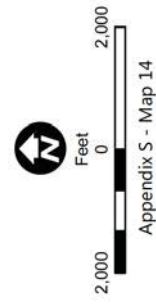
Great Northern Transmission Line  
Final Environmental Impact Statement







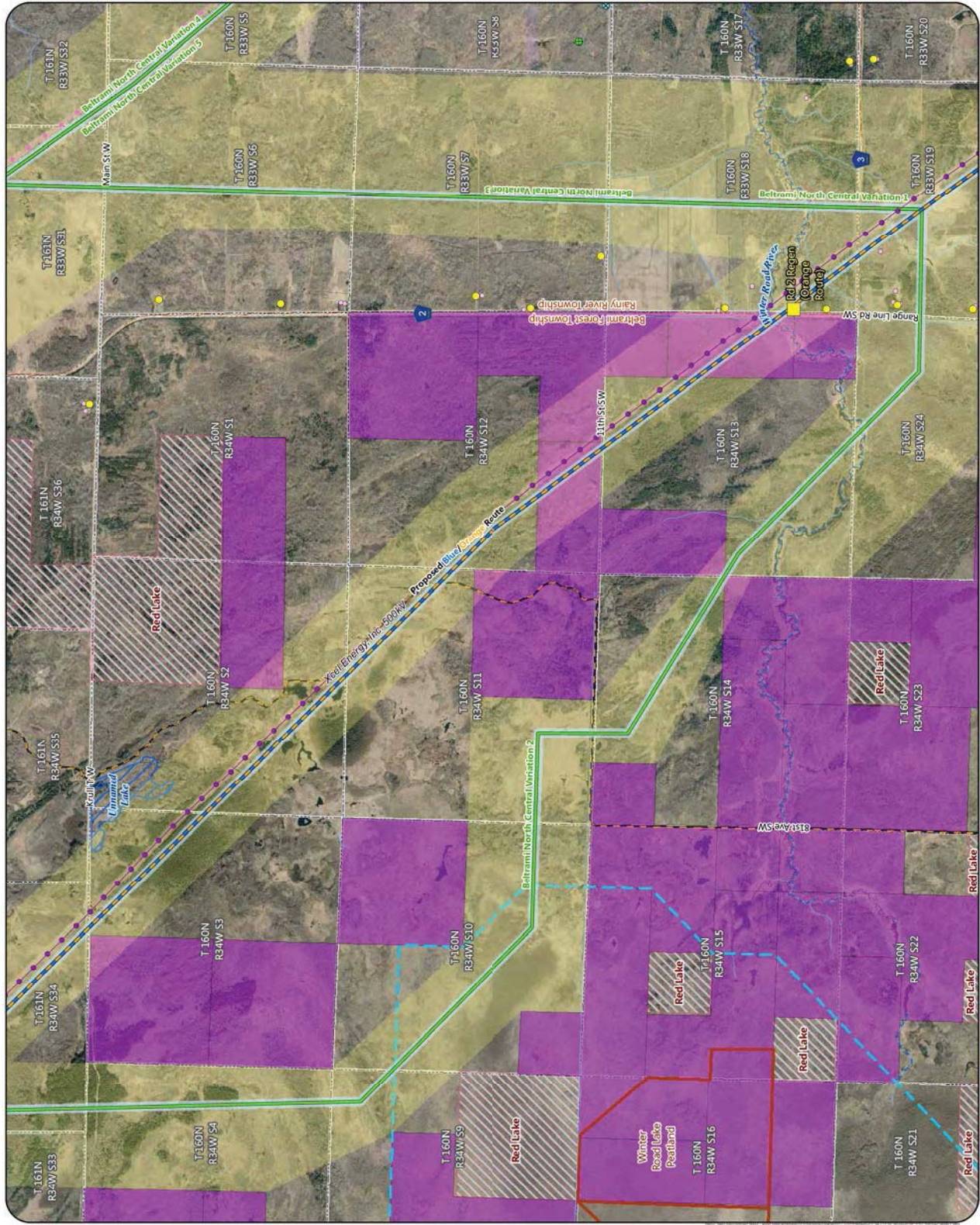
- Proposed Regeneration Site
- ■ Proposed Routes
- — Blue/Orange Route
- Alternatives**
- Anticipated Right-of-Way
- Anticipated Route Width
- Route Variation**
- Residences
- Commercial or Non-Residential Structure
- County Well Index
- Mineral Exploration or Engineering Drillhole
- PWI Watercourse
- PWI Waterbody
- Scientific and Natural Area (SNA)
- Preliminary Peatland SNA Watershed Protection Area
- USFWS Interest Lands
- Indian Reservation Land
- Snowmobile Trail
- Civil Township
- Public Land Survey Section
- Existing Transmission Lines**
- 230 KV
- 500 KV



**Appendix S - Map 14**

**MAP BOOK - WEST SECTION**  
Great Northern Transmission Line  
Final Environmental Impact Statement

U.S. DEPARTMENT OF **ENERGY**  
MINNESOTA DEPARTMENT OF **COMMERCE**





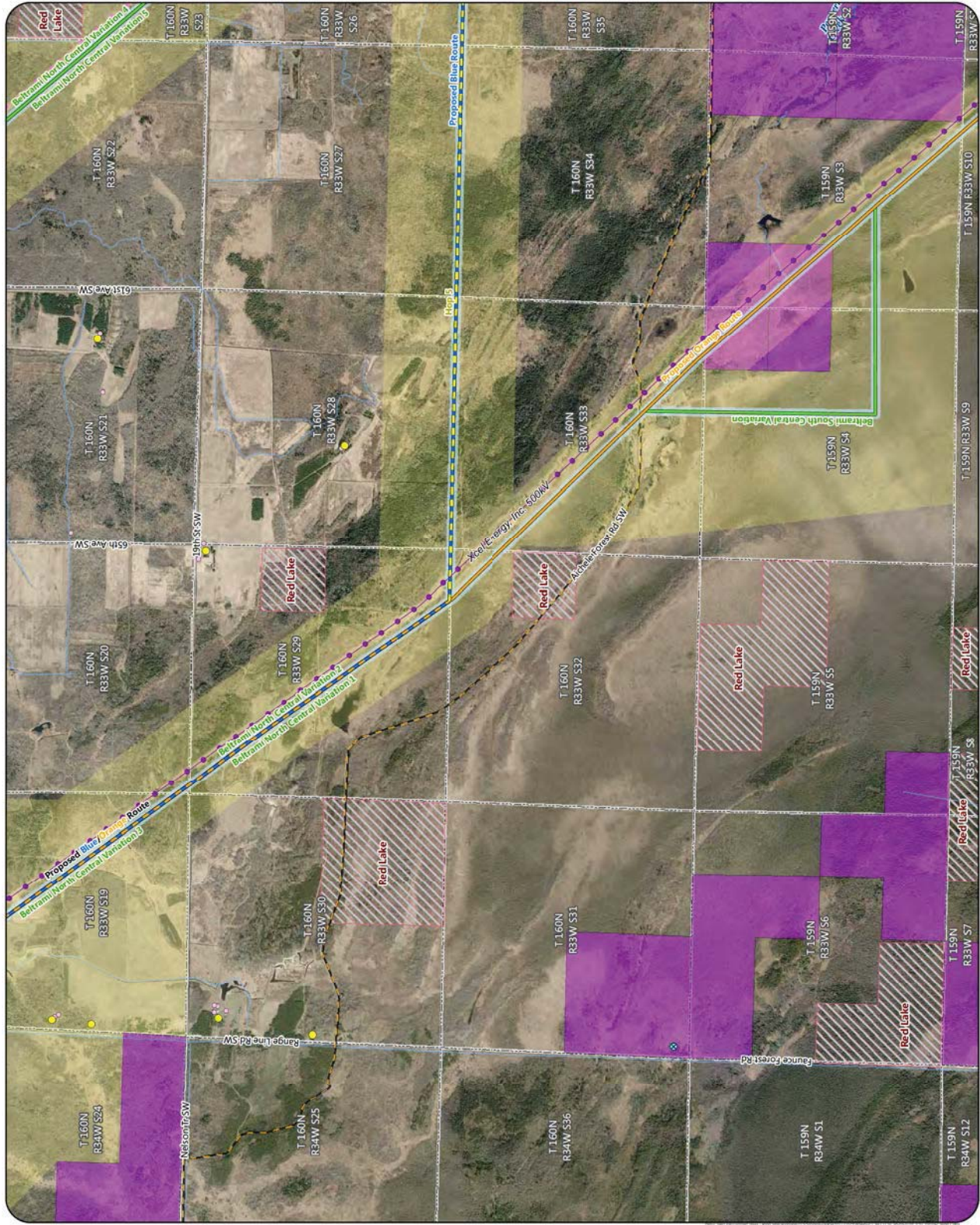


- Proposed Routes**
- Blue Route
  - Orange Route
  - Blue/Orange Route
- Alternatives**
- Route Variation
  - Route Variation Hop
  - Anticipated Right-of-Way
  - Anticipated Route Width
- Residences**
- Commercial or Non-Residential Structure
  - County Well Index
  - Mineral Exploration or Engineering Drillhole
- NHD Watercourse**
- PWI Watercourse
  - USFWS Interest Lands
  - Indian Reservation Land
  - Snowmobile Trail
- Public Land Survey Section**
- Existing Transmission Lines
  - 230 KV
  - 500 KV



Appendix S - Map 15

**MAP BOOK - WEST SECTION**  
Great Northern Transmission Line  
Final Environmental Impact Statement







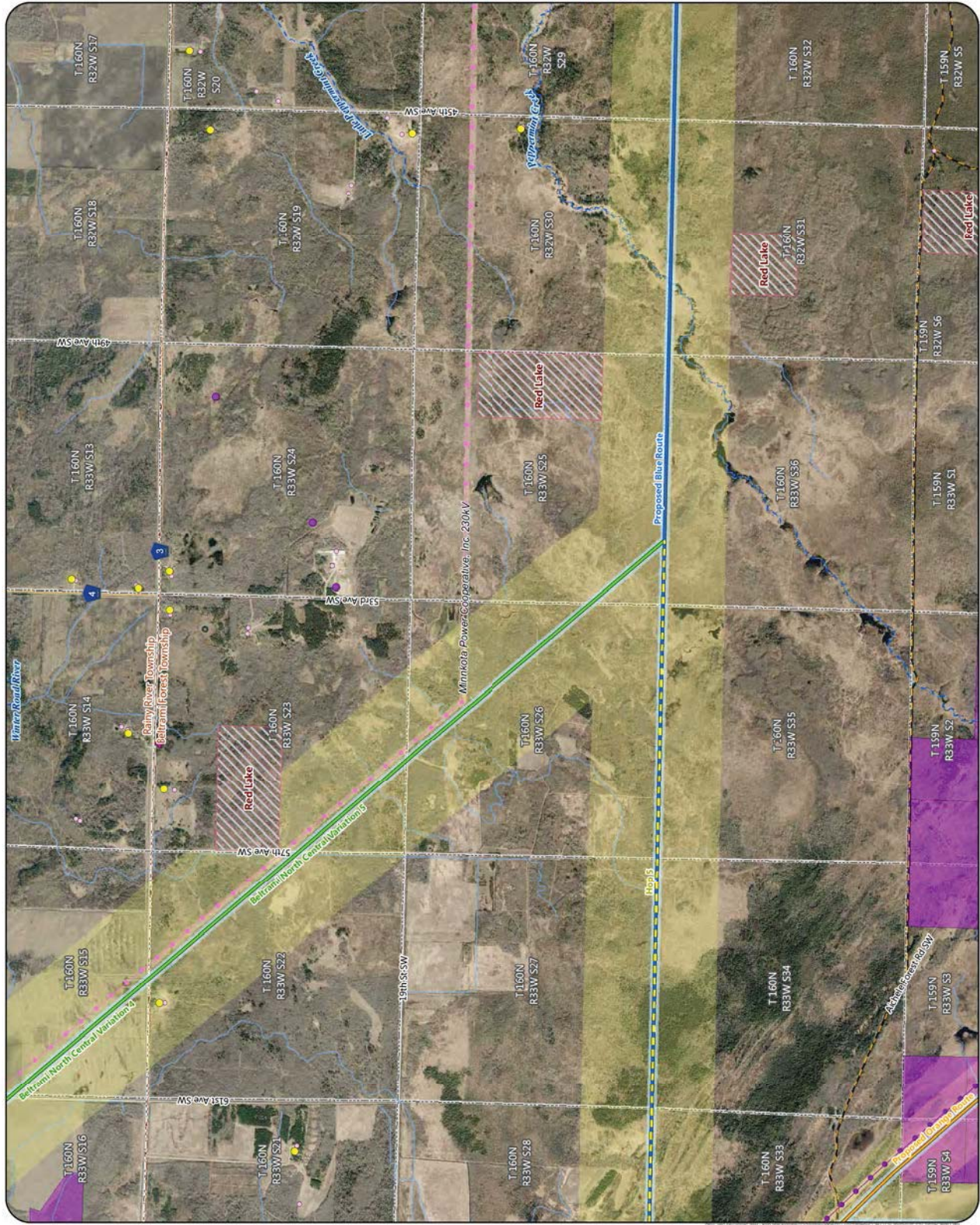
- Proposed Routes**
- Blue Route
  - Orange Route
- Alternatives**
- Route Variation
  - Route Variation Hop
  - Anticipated Right-of-Way
  - Anticipated Route Width
- Residences**
- Commercial or Non-Residential Structure
  - Cemetery
- Watercourse**
- NHD Watercourse
  - PWI Watercourse
- Land**
- USFWS Interest Lands
  - Indian Reservation Land
  - Snowmobile Trail
  - Civil Township
  - Public Land Survey Section
- MPCA Database**
- Multiple Activities
- Existing Transmission Lines**
- 230 KV
  - 500 KV



Appendix S - Map 16

**MAP BOOK - WEST SECTION**  
Great Northern Transmission Line  
Final Environmental Impact Statement

U.S. DEPARTMENT OF ENERGY  
**ENERGY**  
MINNESOTA DEPARTMENT OF COMMERCE







- Proposed Routes**
- Blue Route
  - Anticipated Route Width
  - Anticipated Right-of-Way
  - Residences
  - Commercial or Non-Residential Structure
  - County Well Index
  - Mineral Exploration or Engineering Drillhole
  - NHD Watercourse
  - PWI Watercourse
  - Trout Stream
  - Indian Reservation Land
  - Snowmobile Trail
  - Civil Township
  - Public Land Survey Section
  - Existing Transmission Lines
    - 69 or 115 KV
    - 230 KV



Appendix S - Map 33

**MAP BOOK - CENTRAL SECTION**  
Great Northern Transmission Line  
Final Environmental Impact Statement





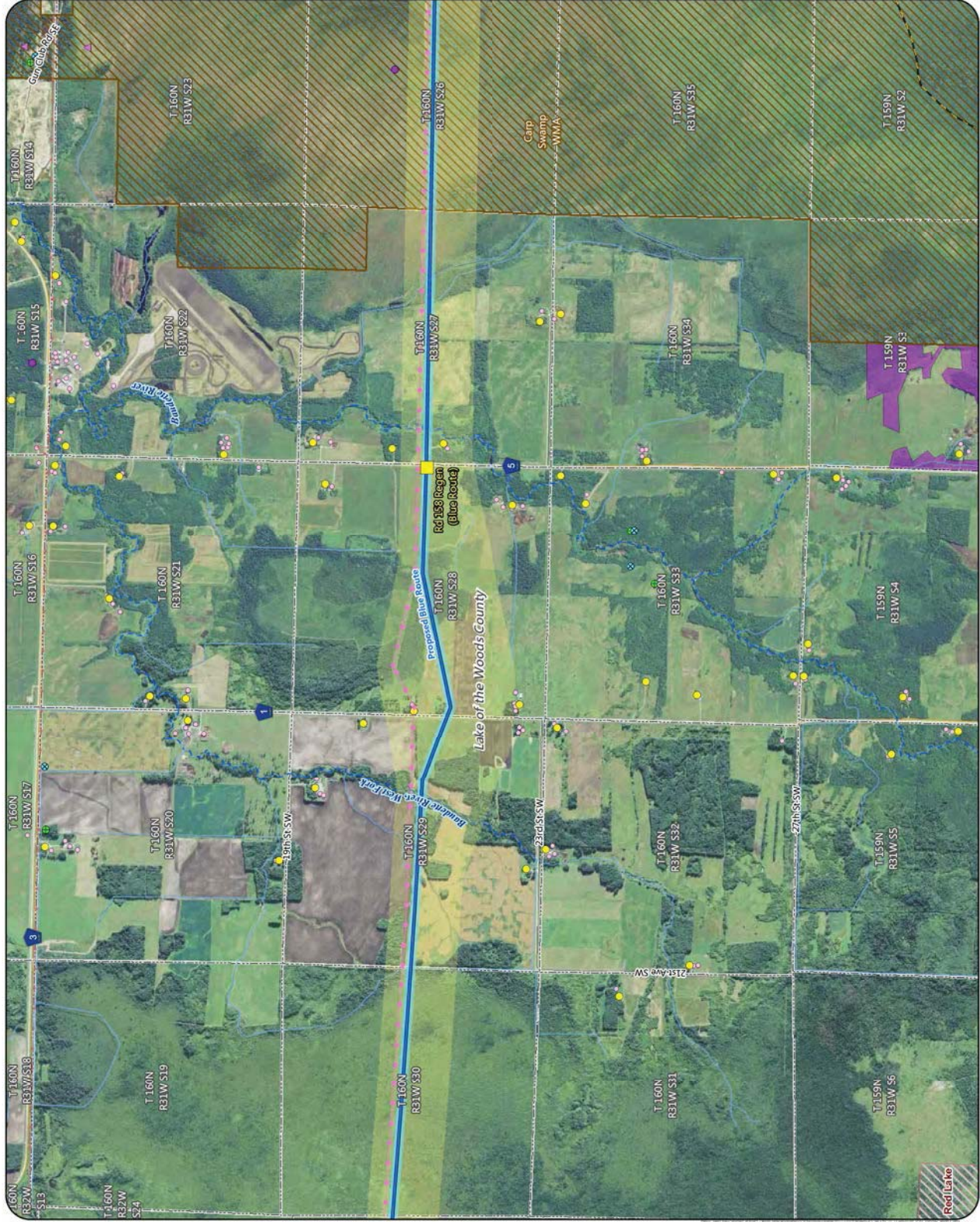


- Proposed Regeneration Site
- Blue Route
- Anticipated Route Width
- Anticipated Right-of-Way
- Residences
- Commercial or Non-Residential Structure
- Aggregate Source Location
- County Well Index
- Mineral Exploration or Engineering Drillhole
- NHD Watercourse
- PWI Watercourse
- Wildlife Management Area (WMA)
- USFWS Interest Lands
- Indian Reservation Land
- Snowmobile Trail
- Public Land Survey Section
- MPCA Database
- Multiple Activities
- Existing Transmission Lines
- 69 or 115 KV
- 230 KV



Appendix S - Map 34

**MAP BOOK - CENTRAL SECTION**  
Great Northern Transmission Line  
Final Environmental Impact Statement







- Proposed Routes**
- Blue Route
- Alternatives**
- Alignment Modification
  - Anticipated Route Width
  - Anticipated Right-of-Way
- Residences**
- Commercial or Non-Residential Structure
  - Aggregate Source Location
  - County Well Index
  - Mineral Exploration or Engineering Drillhole
  - NHD Watercourse
  - PWI Watercourse
  - Wildlife Management Area (WMA)
  - USFWS Interest Lands
  - Indian Reservation Land
  - Snowmobile Trail
  - Public Land Survey Section
  - MPCA Database
- Multiple Activities**
- Multiple Activities
- Existing Transmission Lines**
- 69 or 115 kV
  - 230 kV



Appendix S - Map 35

**MAP BOOK - CENTRAL SECTION**  
Great Northern Transmission Line  
Final Environmental Impact Statement







- Proposed Routes**
- Blue Route
- Alternatives**
- Alignment Modification
  - Anticipated Route Width
  - Anticipated Right-of-Way
- Residences**
- Commercial or Non-Residential Structure
  - Aggregate Source Location
  - Mineral Exploration or Engineering Drillhole
  - NHD Watercourse
  - PWI Watercourse
  - Wildlife Management Area (WMA)
  - USFWS Interest Lands
  - Indian Reservation Land
  - Public Land Survey Section
- Existing Transmission Lines**
- 69 or 115 KV
  - 230 KV



Appendix S - Map 36

**MAP BOOK - CENTRAL SECTION**  
Great Northern Transmission Line  
Final Environmental Impact Statement







- Proposed Routes**
- Blue Route
  - Anticipated Route Width
  - Anticipated Right-of-Way
  - Residences
  - Commercial or Non-Residential Structure
  - Aggregate Source Location
  - NHD Watercourse
  - PMI Watercourse
  - Indian Reservation Land
  - Public Land Survey Section
  - Existing Transmission Lines
  - 69 or 115 kV
  - 230 kV

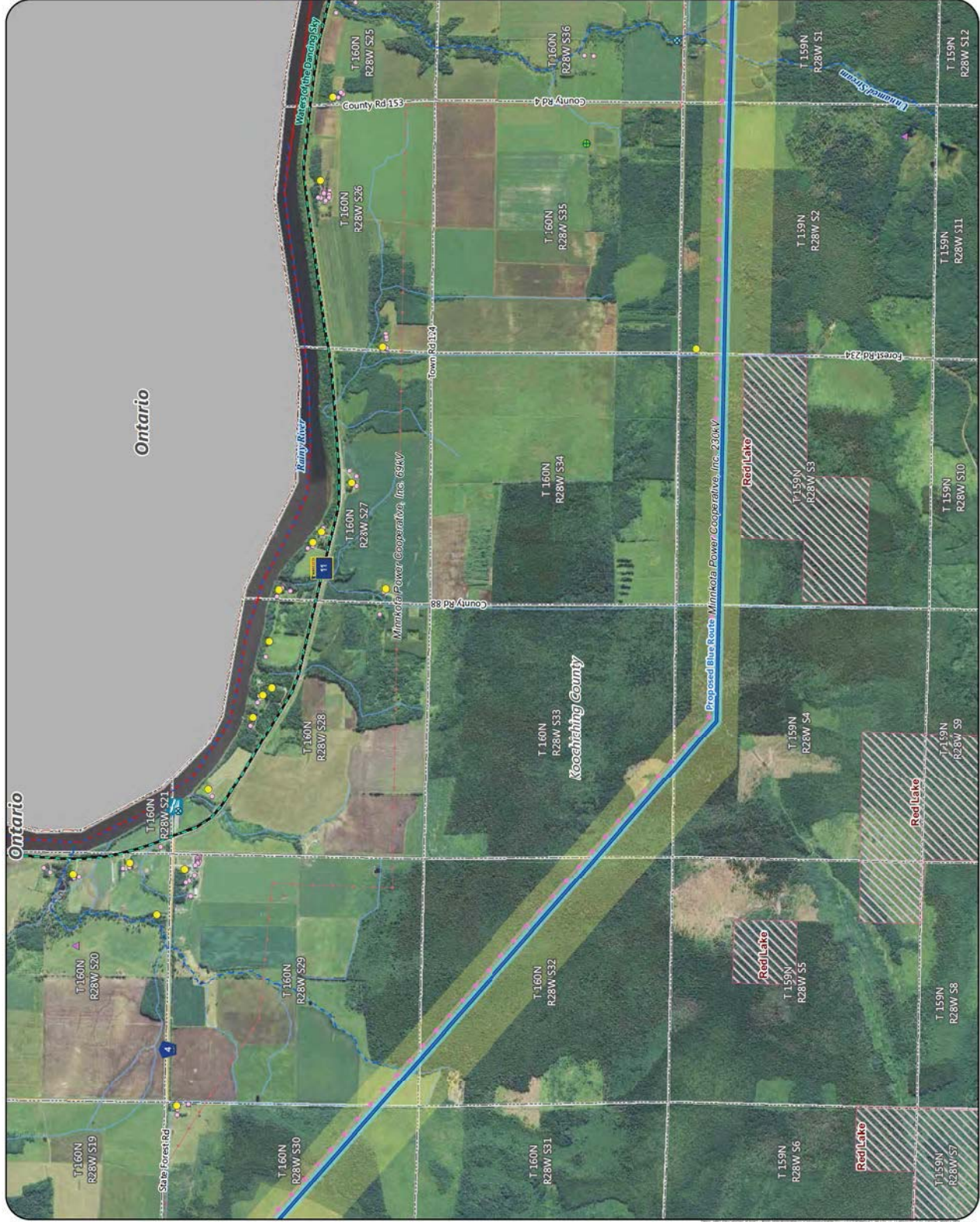


Appendix S - Map 37

**MAP BOOK - CENTRAL SECTION**  
Great Northern Transmission Line  
Final Environmental Impact Statement







- Proposed Routes**
- Blue Route
  - Anticipated Route Width
  - Anticipated Right-of-Way
  - Residences
  - Commercial or Non-Residential Structure
  - Aggregate Source Location
  - County Well Index
  - Mineral Exploration or Engineering Drillhole
  - Trailer Launch Water Access
  - NHD Watercourse
  - PWI Watercourse
  - MPCA Impaired Stream
  - Indian Reservation Land
  - Scenic Byway
  - Chall Township
  - Public Land Survey Section
  - County Boundary
  - International Boundary
  - Existing Transmission Lines
  - 69 or 115 KV
  - 230 KV



Appendix S - Map 38

**MAP BOOK - CENTRAL SECTION**  
Great Northern Transmission Line  
Final Environmental Impact Statement







- Proposed Routes**
- Blue Route
- Alternatives**
- Route Variation
  - Anticipated Route Width
  - Anticipated Right-of-Way
- Residences**
- Commercial or Non-Residential Structure
  - Cemetery
  - Aggregate Source Location
  - County Well Index
  - Mineral Exploration or Engineering Drillhole
  - NHD Watercourse
  - PWI Watercourse
  - Indian Reservation Land
  - Scenic Byway
  - Snowmobile Trail
  - Public Land Survey Section
- MPCA Database**
- Hazardous Waste
  - Tanks and Leaks
  - Multiple Activities
- Existing Transmission Lines**
- 69 or 115 KV
  - 230 KV



Appendix S - Map 39

**MAP BOOK - CENTRAL SECTION**  
Great Northern Transmission Line  
Final Environmental Impact Statement







- Proposed Routes**
- Blue Route
- Alternatives**
- Route Variation
  - Anticipated Route Width
  - Anticipated Right-of-Way
- Residences**
- Commercial or Non-Residential Structure
  - County Well Index
  - Mineral Exploration or Engineering Drillhole
  - NHD Watercourse
  - PWI Watercourse
  - Preliminary Peatland SNA Watershed Protection Area
  - Indian Reservation Land
  - Snowmobile Trail
  - Public Land Survey Section
- MPCA Database**
- Multiple Activities
- Existing Transmission Lines**
- 69 or 115 KV
  - 230 KV



Appendix S - Map 40

**MAP BOOK - CENTRAL SECTION**  
Great Northern Transmission Line  
Final Environmental Impact Statement

