

- Proposed Routes**
- Blue Route
 - Alternatives**
 - Route Variation
 - Anticipated Route Width
 - Anticipated Right-of-Way
 - County Well Index
 - Mineral Exploration or Engineering Drillhole
 - NHD Watercourse
 - NHD Waterbody
 - PWT Waterbody
 - Scientific and Natural Area (SNA)
 - Preliminary Peatland SNA Watershed Protection Area
 - Indian Reservation Land
 - Snowmobile Trail
 - Public Land Survey Section
 - Existing Transmission Lines
 - 69 or 115 KV
 - 230 KV



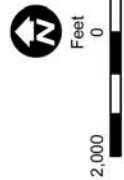
Appendix S - Map 41

MAP BOOK - CENTRAL SECTION
Great Northern Transmission Line
Final Environmental Impact Statement





- Proposed Routes**
- Blue Route
- Segment Options**
- C2 Segment Option
- Alternatives**
- Route Variation
- Anticipated Route Width
- Anticipated Right-of-Way
- Residences
- Commercial or Non-Residential Structure
- NHD Watercourse
- PWI Watercourse
- Scientific and Natural Area (SNA)
- Preliminary Peatland SNA Watershed
- Protection Area
- Snowmobile Trail
- Public Land Survey Section
- Existing Transmission Lines**
- 69 or 115 KV
- 230 KV



Appendix S - Map 42

MAP BOOK - CENTRAL SECTION
 Great Northern Transmission Line
 Final Environmental Impact Statement



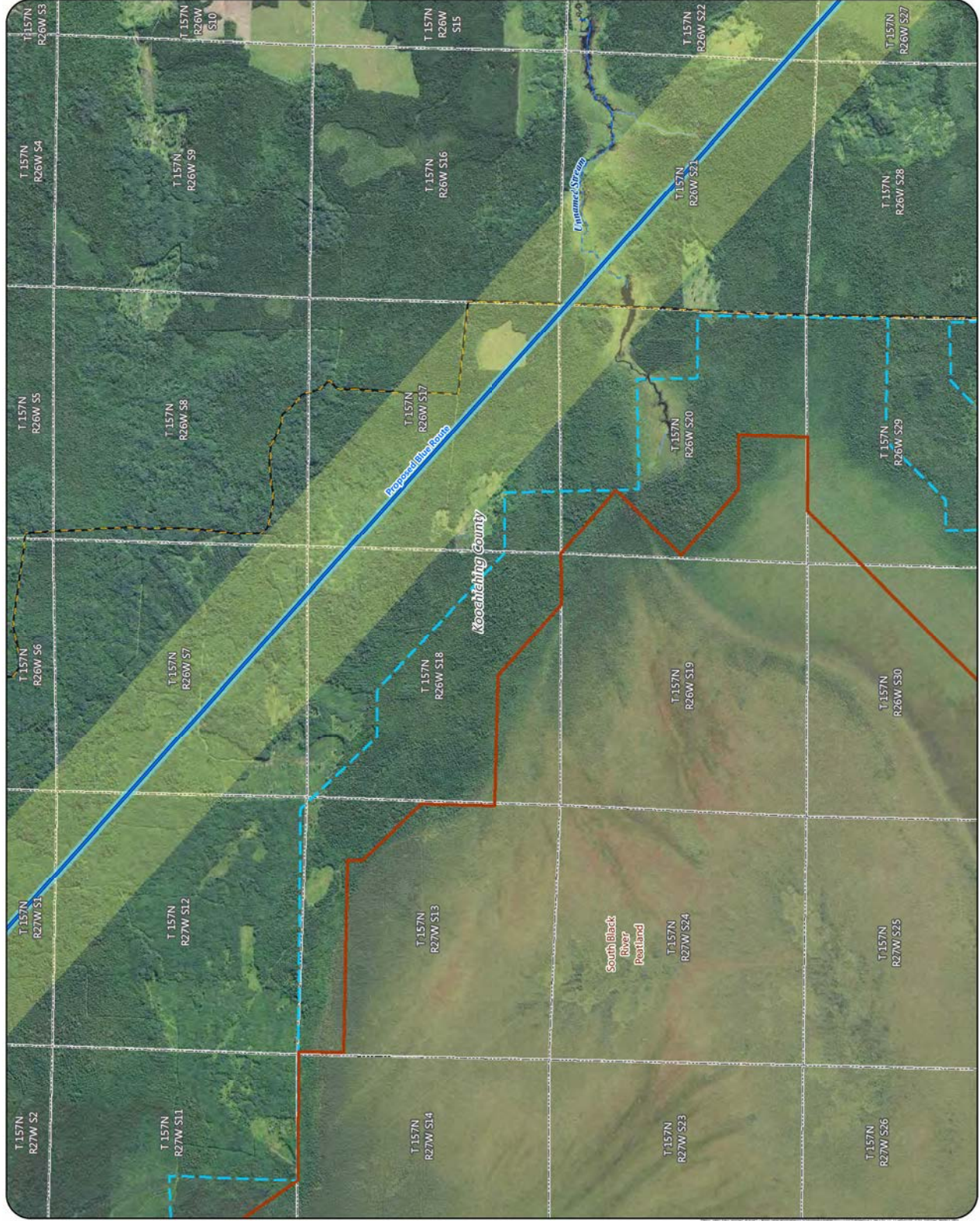


- Proposed Routes**
- Blue Route
 - Anticipated Route Width
 - Anticipated Right-of-Way
 - NHD Watercourse
 - PMW Watercourse
 - Scientific and Natural Area (SNA)
 - Preliminary Peatland SNA Watershed Protection Area
 - Snowmobile Trail
 - Public Land Survey Section



Appendix S - Map 43

MAP BOOK - CENTRAL SECTION
Great Northern Transmission Line
Final Environmental Impact Statement





- Proposed Routes**
- Blue Route
 - Anticipated Route Width
 - NHD Watercourse
 - PWT Watercourse
 - Public Land Survey Section



Appendix S - Map 44

MAP BOOK - CENTRAL SECTION
Great Northern Transmission Line
Final Environmental Impact Statement





- Proposed Routes**
- Blue Route
 - Anticipated Route Width
 - Anticipated Right-of-Way
 - Residences
 - Aggregate Source Location
 - Carry-In Water Access
 - State Water Trail
 - NHD Watercourse
 - PWI Watercourse
 - MPCA Impaired Stream
 - Civil Township
 - Public Land Survey Section



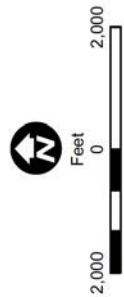
Appendix S - Map 45

MAP BOOK - CENTRAL SECTION
Great Northern Transmission Line
Final Environmental Impact Statement





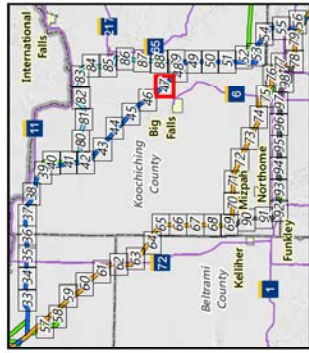
- Proposed Regeneration Site
- Blue Route
- Anticipated Route Width
- Anticipated Right-of-Way
- Residences
- Commercial or Non-Residential Structure
- County Well Index
- Mineral Exploration or Engineering Drillhole
- Carry-in Water Access
- State Water Trail
- NHD Watercourse
- PMT Watercourse
- MPCA Impaired Stream
- Ecologically Important Lowland Conifers
- Snowmobile Trail
- State Trail
- Civil Township
- Public Land Survey Section
- MPCA Database
- Tanks and Leaks
- Existing Transmission Lines
- 69 or 115 KV



Appendix S - Map 46

MAP BOOK - CENTRAL SECTION
Great Northern Transmission Line
Final Environmental Impact Statement





- Proposed Regeneration Site
- Blue Route
- Anticipated Route Width
- Anticipated Right-of-Way
- + Airport
- NHD Watercourse
- PWT Watercourse
- Ecologically Important Lowland Conifers
- Snowmobile Trail
- State Trail
- Public Land Survey Section
- MPCA Database
- Hazardous Waste
- Existing Transmission Lines
- 69 or 115 KV



Appendix S - Map 47

MAP BOOK - CENTRAL SECTION
Great Northern Transmission Line
Final Environmental Impact Statement



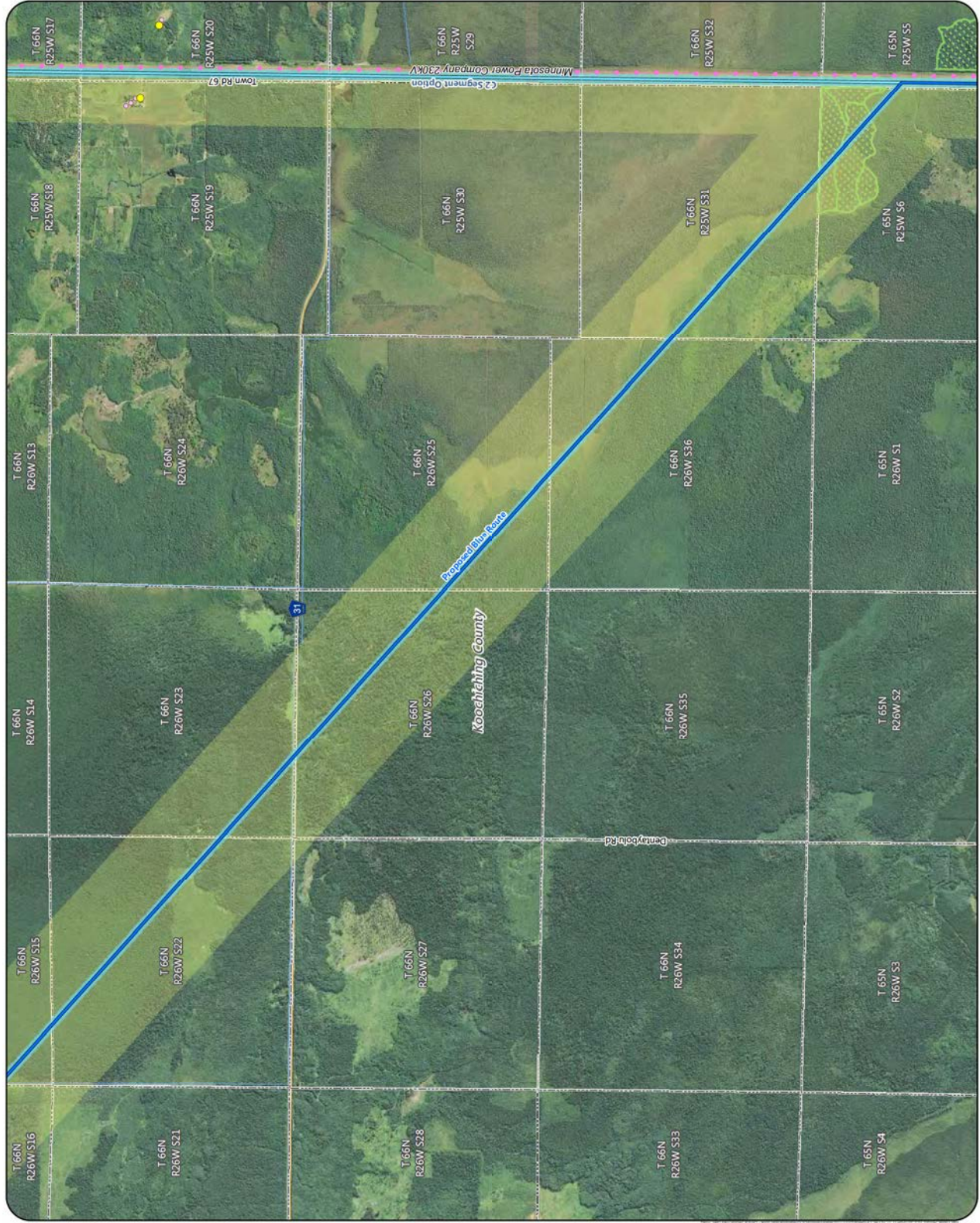


- Proposed Routes**
- Blue Route
- Segment Options**
- C2 Segment Option
- Anticipated Route Width**
- Anticipated Right-of-Way
- Residences**
- Commercial or Non-Residential Structure
 - NHD Watercourse
 - Ecologically Important Lowland Conifers
- Public Land Survey Section**
- Existing Transmission Lines
 - 230 kV



Appendix S - Map 48

MAP BOOK - CENTRAL SECTION
Great Northern Transmission Line
Final Environmental Impact Statement





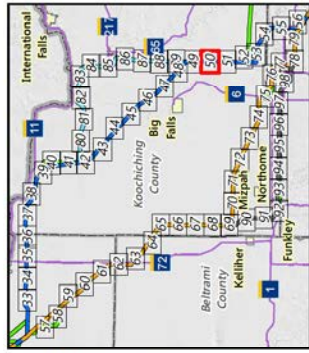
- Proposed Routes**
- Blue Route
 - Segment Option
 - Anticipated Route Width
 - Anticipated Right-of-Way
 - NHD Watercourse
 - Scientific and Natural Area (SNA)
 - Preliminary Peatland SNA Watershed Protection Area
 - Ecologically Important Lowland Complexes
 - Public Land Survey Section
 - Existing Transmission Lines
 - 230 kV



Appendix S - Map 49

MAP BOOK - CENTRAL SECTION
Great Northern Transmission Line
Final Environmental Impact Statement



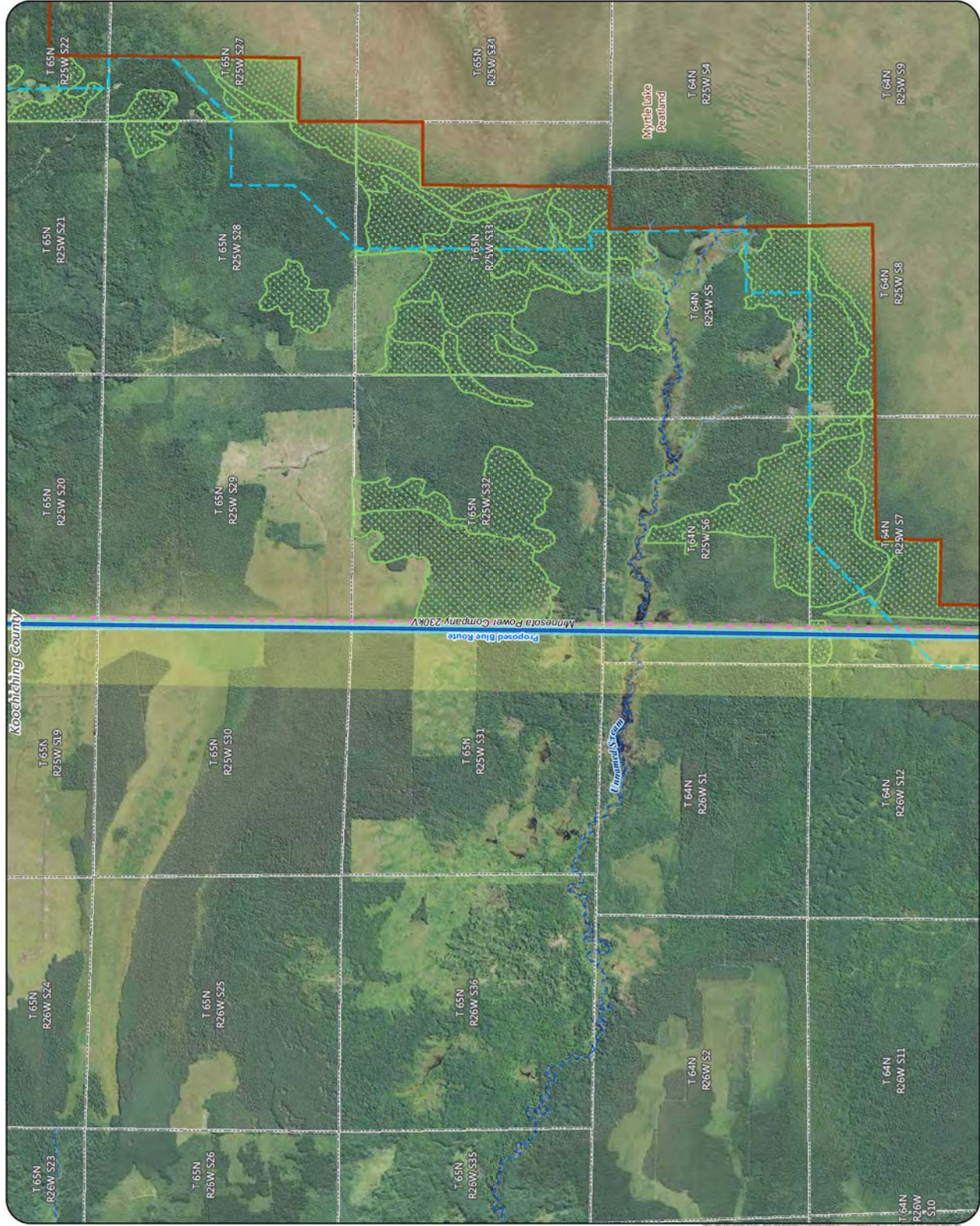


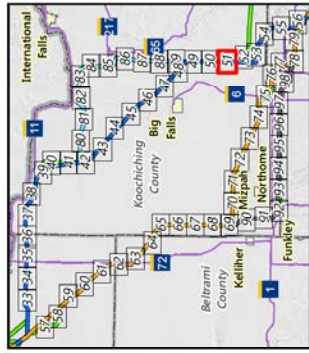
- Proposed Routes**
- Blue Route
 - Anticipated Route Width
 - Anticipated Right-of-Way
 - NHD Watercourse
 - PWT Watercourse
 - Scientific and Natural Area (SNA)
 - Preliminary Peatland SNA Watershed Protection Area
 - Ecologically Important Lowland Conifers
 - Public Land Survey Section
 - Battling Transmission Lines
 - 230 KV



Appendix S - Map 50

MAP BOOK - CENTRAL SECTION
Great Northern Transmission Line
Final Environmental Impact Statement





- Proposed Routes**
- Blue Route
 - Anticipated Route Width
 - Anticipated Right-of-Way
 - NHD Watercourse
 - Scientific and Natural Area (SNA)
 - Preliminary Peatland SNA Watershed Protection Area
 - Ecologically Important Lowland Confines
 - Public Land Survey Section
- Existing Transmission Lines**
- 230 KV
 - 500 KV



Appendix S - Map 51

MAP BOOK - CENTRAL SECTION
Great Northern Transmission Line
Final Environmental Impact Statement





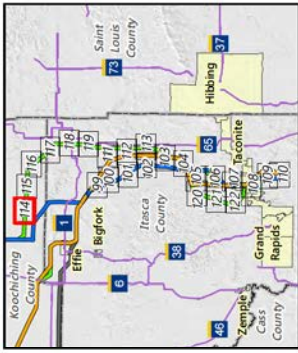
- Proposed Routes**
- Blue Route
- Alternatives**
- Route Variation
 - Anticipated Route Width
 - Anticipated Right-of-Way
- Other Features**
- Residences
 - Commercial or Non-Residential Structure
 - County Well Index
 - Mineral Exploration or Engineering Drillhole
 - NHD Watercourse
 - PWI Watercourse
 - Ecologically Important Lowland Conifers
 - Public Land Survey Section
- Existing Transmission Lines**
- 230 KV
 - 500 KV



Appendix S - Map 52

MAP BOOK - CENTRAL SECTION
Great Northern Transmission Line
Final Environmental Impact Statement



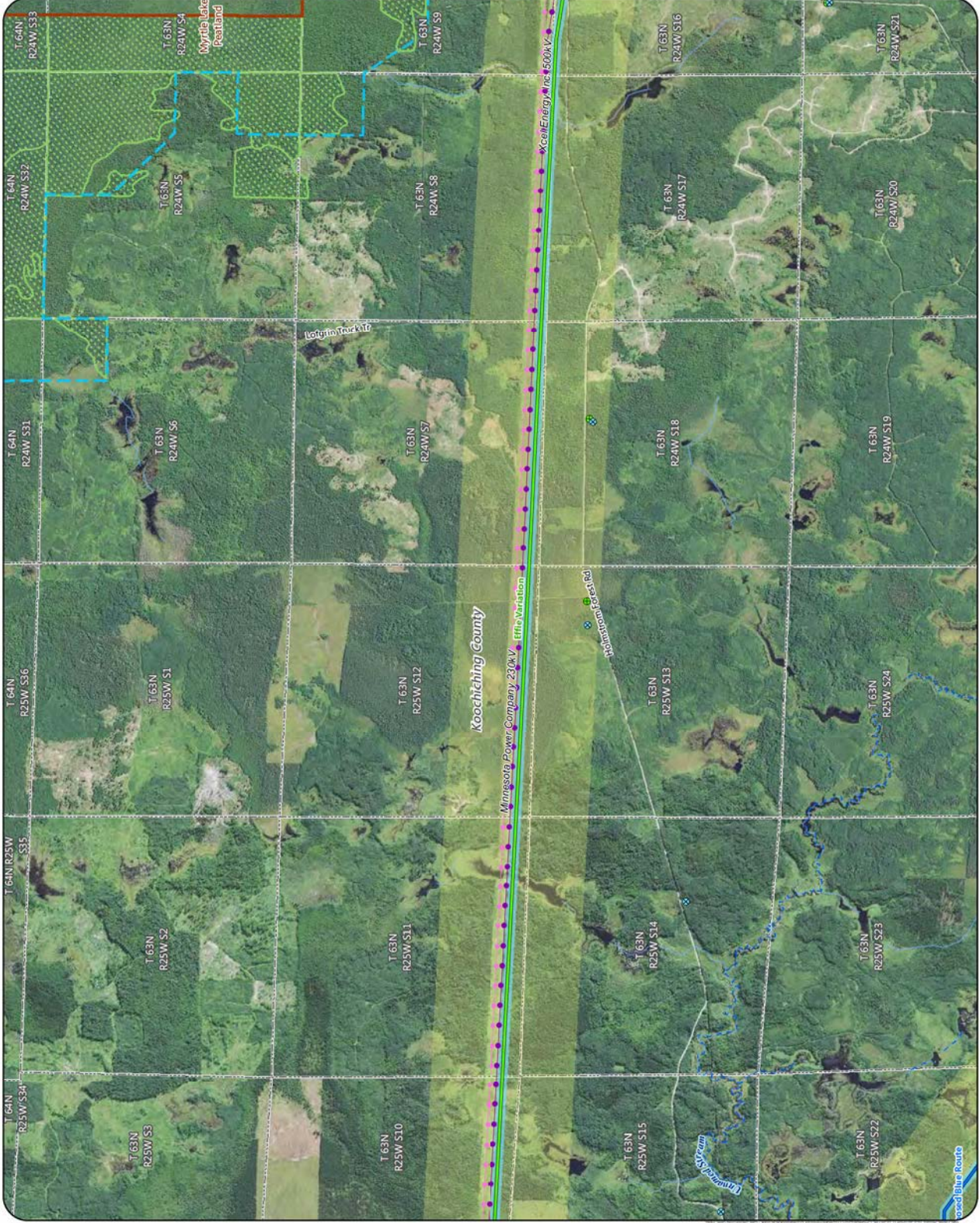


- Proposed Routes**
- Blue Route
 - Anticipated Route Width
 - Route Variation
 - Anticipated Right-of-Way
 - County Well Index
 - Mineral Exploration or Engineering Drillhole
 - NHD Watercourse
 - PMI Watercourse
 - Scientific and Natural Area (SNA)
 - Preliminary Peatland SNA Watershed Protection Area
 - Ecologically Important Lowland Conifers
 - Public Land Survey Section
 - Existing Transmission Lines
 - 230 kV
 - 500 kV



Appendix S - Map 114

MAP BOOK - EAST SECTION
Great Northern Transmission Line
Final Environmental Impact Statement



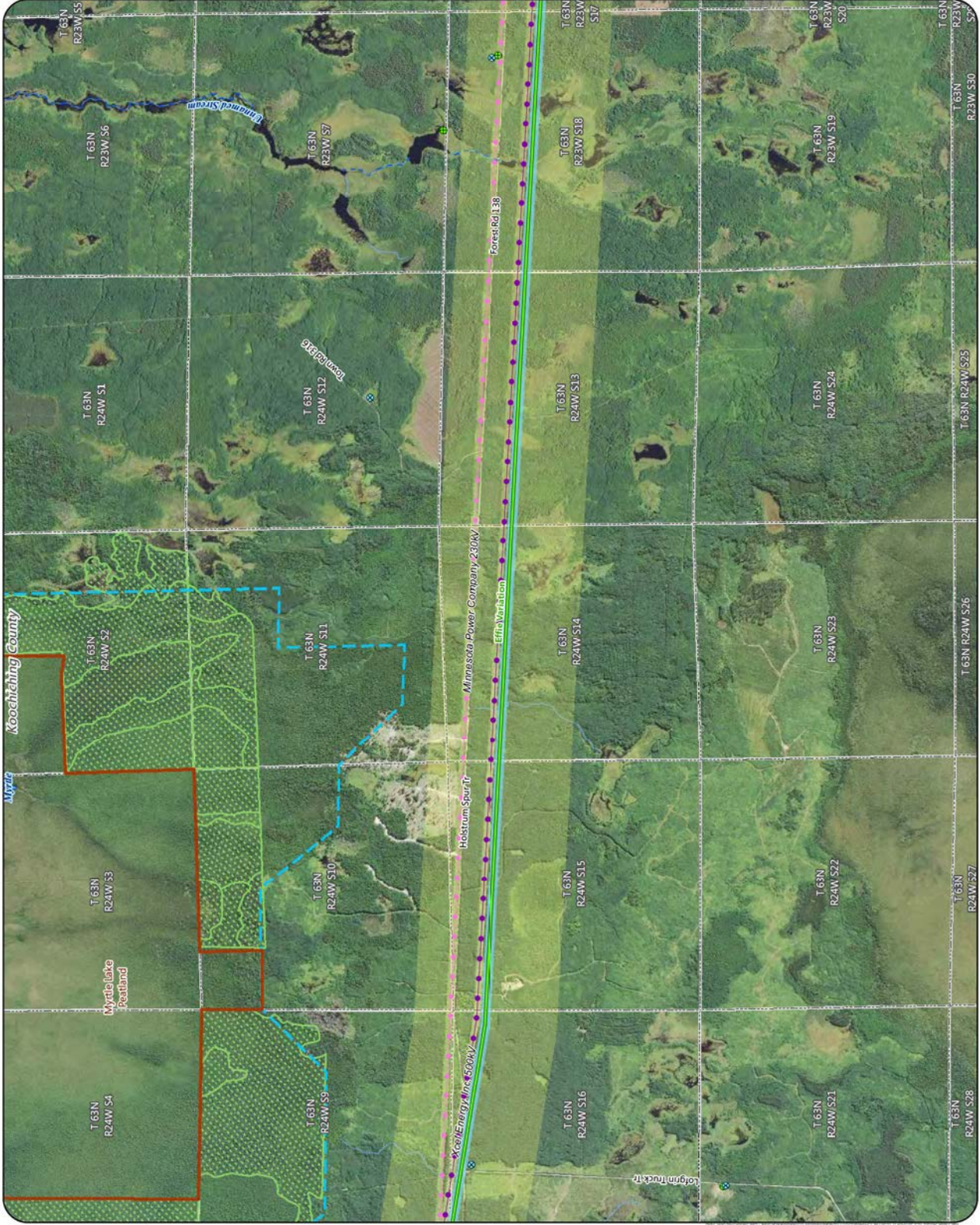


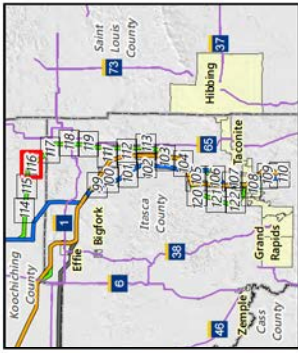
- Alternatives**
- Route Variation
 - Anticipated Route Width
 - Anticipated Right-of-Way
 - County Well Index
 - Mineral Exploration or Engineering Drillhole
 - NHD Watercourse
 - PMI Watercourse
 - NHD Waterbody
 - PMI Waterbody
 - Scientific and Natural Area (SNA)
 - Preliminary Peatland SNA Watershed Protection Area
 - Ecologically Important Lowland Conifers
 - Public Land Survey Section
 - Existing Transmission Lines
 - 230 kV
 - 500 kV



Appendix S - Map 115

MAP BOOK - EAST SECTION
Great Northern Transmission Line
Final Environmental Impact Statement





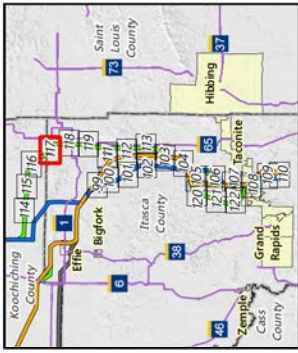
- Alternatives**
- Route Variation
 - Anticipated Route Width
 - Anticipated Right-of-Way
 - Residences
 - Commercial or Non-Residential Structure
 - County Well Index
 - Mineral Exploration or Engineering Drillhole
 - NHD Watercourse
 - PMI Watercourse
 - Trout Stream
 - NHD Waterbody
 - PMI Waterbody
 - Public Land Survey Section
 - Existing Transmission Lines
 - 230 kv
 - 500 kv



Appendix S - Map 116

MAP BOOK - EAST SECTION
Great Northern Transmission Line
Final Environmental Impact Statement



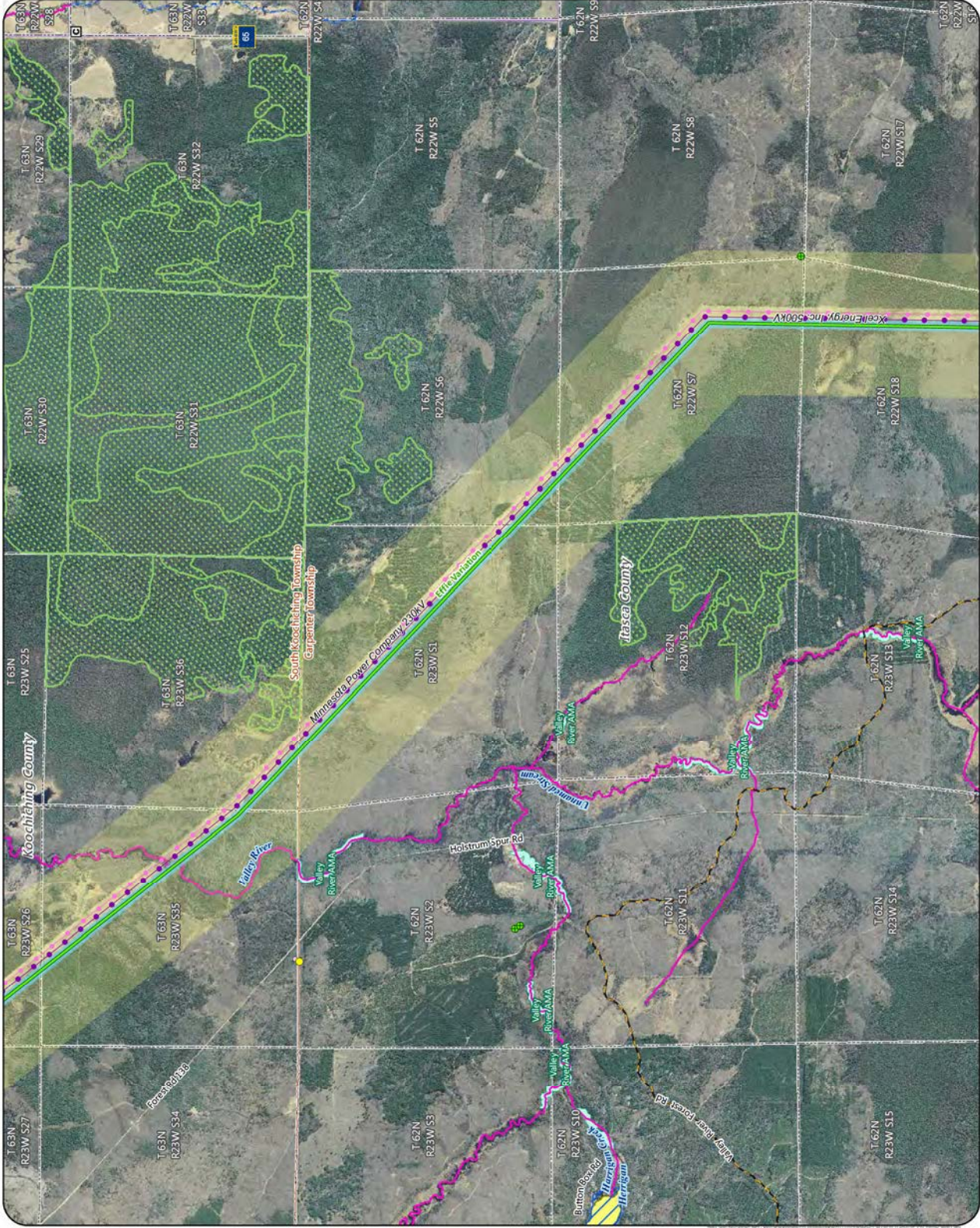


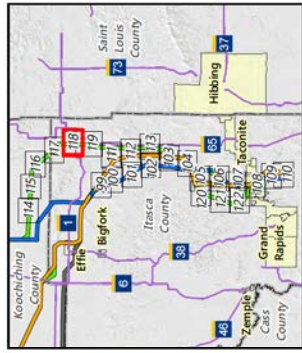
- Alternatives**
- Route Variation
 - Anticipated Route Width
 - Anticipated Right-of-Way
 - Residences
 - Commercial or Non-Residential Structure
 - Church
 - Mineral Exploration or Engineering Drillhole
 - NHD Watercourse
 - PMI Watercourse
 - Trout Stream
 - NHD Waterbody
 - PMI Waterbody
 - Wild Rice Lake
 - Aquatic Management Area
 - Ecologically Important Lowland Conifers
 - Snowmobile Trail
 - Civil Township
 - Public Land Survey Section
 - Existing Transmission Lines
 - 230 KV
 - 500 KV



Appendix S - Map 117

MAP BOOK - EAST SECTION
Great Northern Transmission Line
Final Environmental Impact Statement





Alternatives

- Route Variation
- Anticipated Route Width
- Anticipated Right-of-Way
- Residences
- Commercial or Non-Residential Structure
- School
- Aggregate Source Location
- County Well Index
- Mineral Exploration or Engineering Drillhole
- State Forest Campground
- NHD Watercourse
- PWI Watercourse
- Trout Stream
- PWI Waterbody
- Aquatic Management Area
- State Game Refuge
- Ecologically Important Lowland Conifers
- Snowmobile Trail
- Civil Township
- Public Land Survey Section
- MPCA Database
- Tanks and Leaks
- Existing Transmission Lines
- 230 kV
- 500 kV



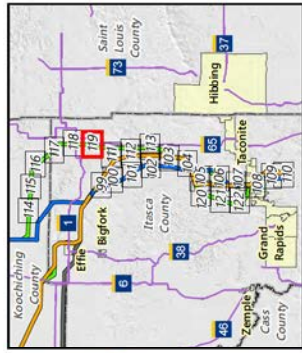
2,000
0
2,000

Feet

Appendix S - Map 118

MAP BOOK - EAST SECTION
Great Northern Transmission Line
Final Environmental Impact Statement





Alternatives

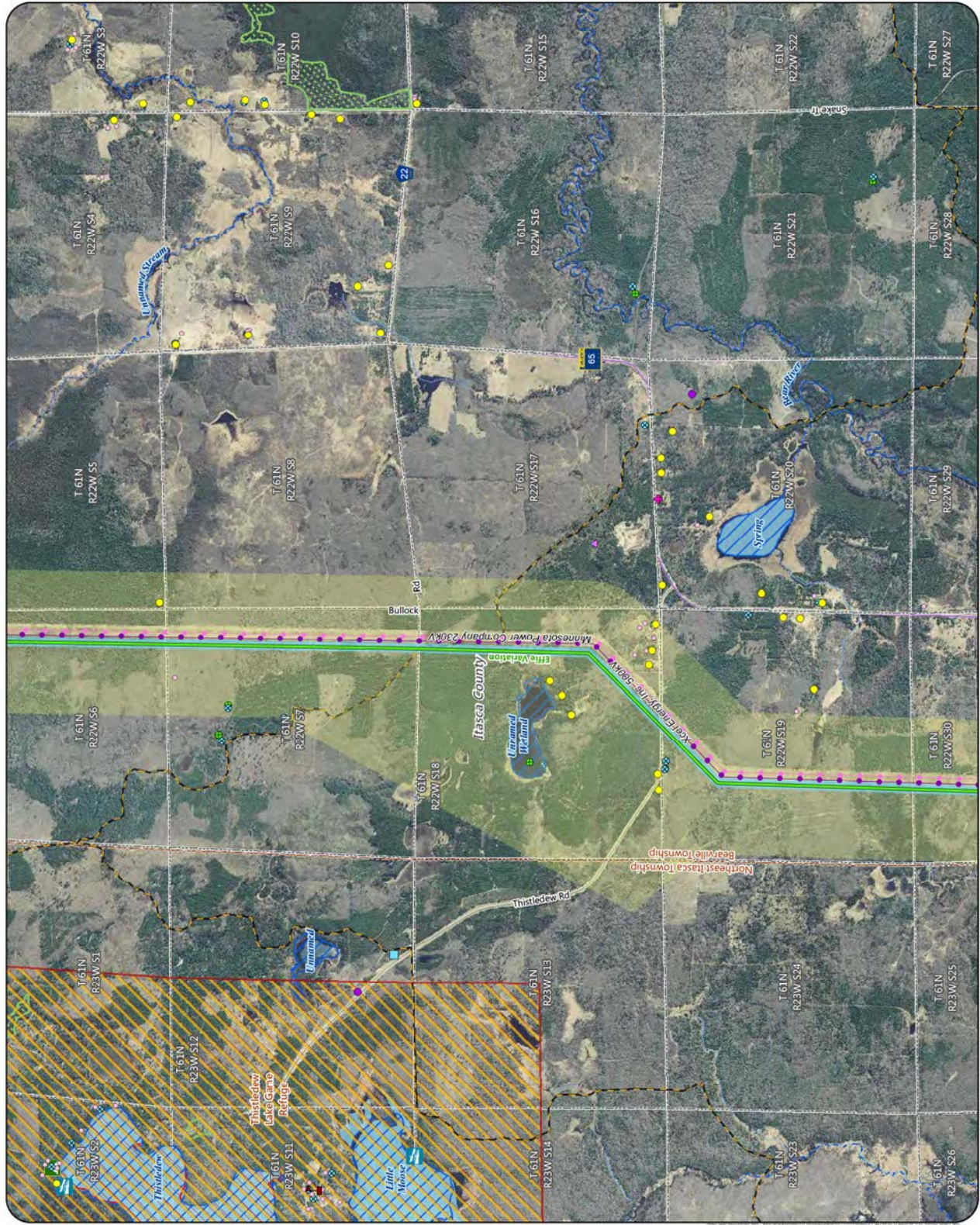
- Route Variation
- Anticipated Route Width
- Anticipated Right-of-Way
- Residences
- Commercial or Non-Residential Structure
- Cemetery
- School
- Aggregate Source Location
- County Well Index
- Mineral Exploration or Engineering Drillhole
- State Forest Campground
- Trailer Launch Water Access
- NHD Watercourse
- PMT Watercourse
- NHD Waterbody
- PMT Waterbody
- MPCA Impaired Waterbody
- State Game Refuge
- Ecologically Important Lowland Conifers
- Snowmobile Trail
- Civil Township
- Public Land Survey Section
- MPCA Database
- Hazardous Waste
- Multiple Activities

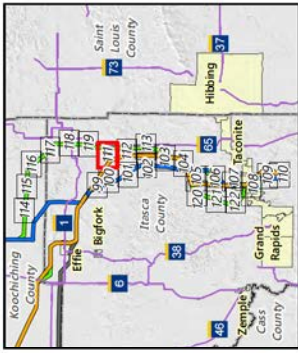


2,000
0
2,000
Feet

Appendix S - Map 119

MAP BOOK - EAST SECTION
Great Northern Transmission Line
Final Environmental Impact Statement



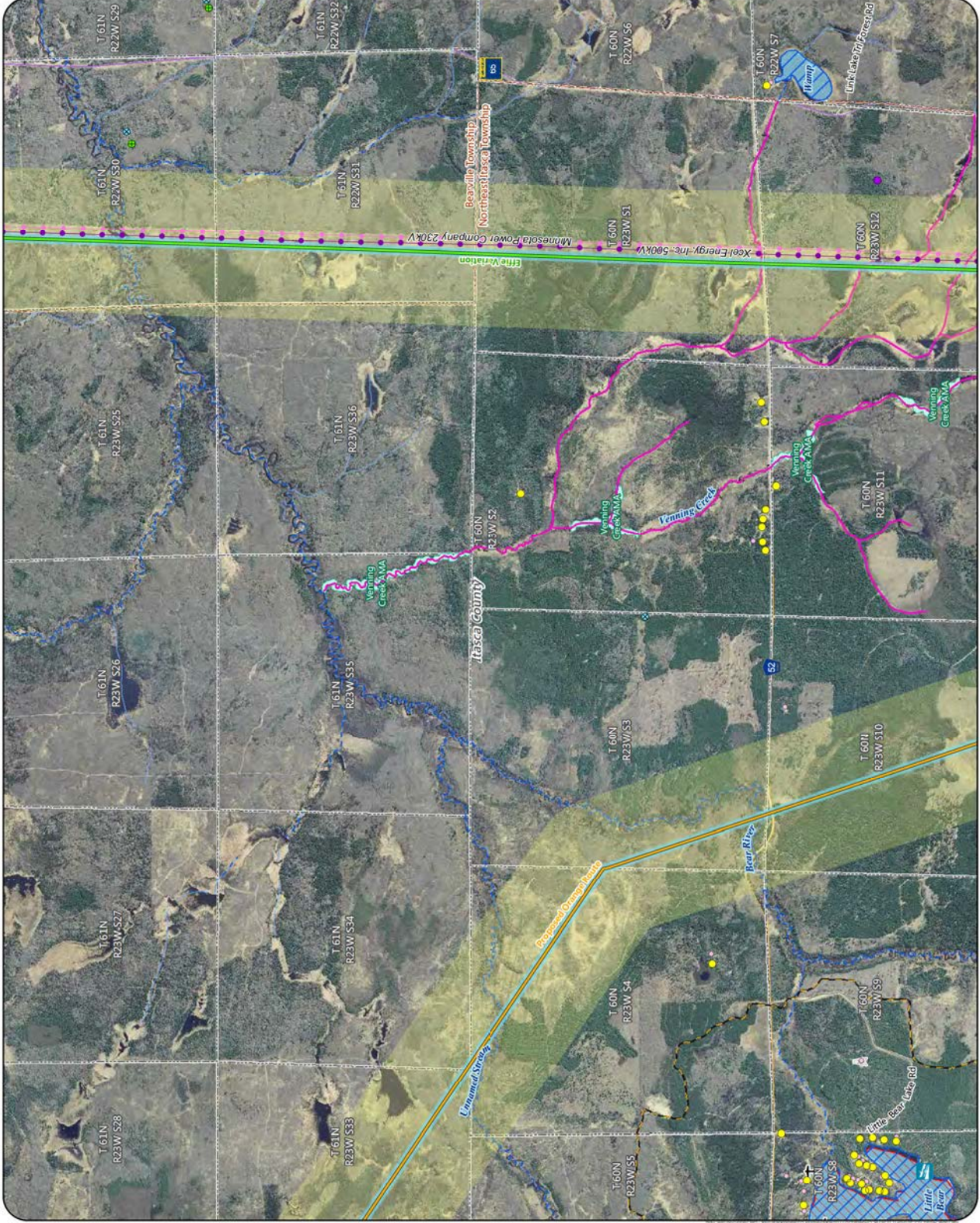


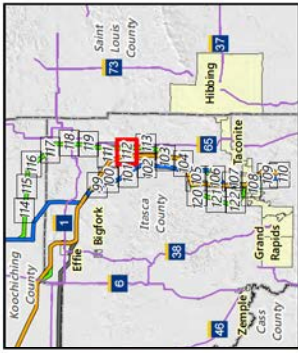
- Proposed Routes**
- Change Route
 - Alternatives
 - Route Variation
 - Anticipated Route Width
 - Anticipated Right-of-Way
 - Residences
 - Commercial or Non-Residential Structure
 - Airstrip
 - Communication Tower
 - County Well Index
 - Mineral Exploration or Engineering Drillhole
 - Trailer Launch Water Access
 - NHD Watercourse
 - PMI Watercourse
 - Trot Stream
 - NHD Waterbody
 - PMI Waterbody
 - MPCA Impaired Waterbody
 - Aquatic Management Area
 - Snowmobile Trail
 - Civil Township
 - Public Land Survey Section
 - MPCA Database
 - Tanks and Leaks
 - Multiple Activities
 - Existing Transmission Lines
 - 230 KV
 - 500 KV



Appendix S - Map 111

MAP BOOK - EAST SECTION
Great Northern Transmission Line
Final Environmental Impact Statement



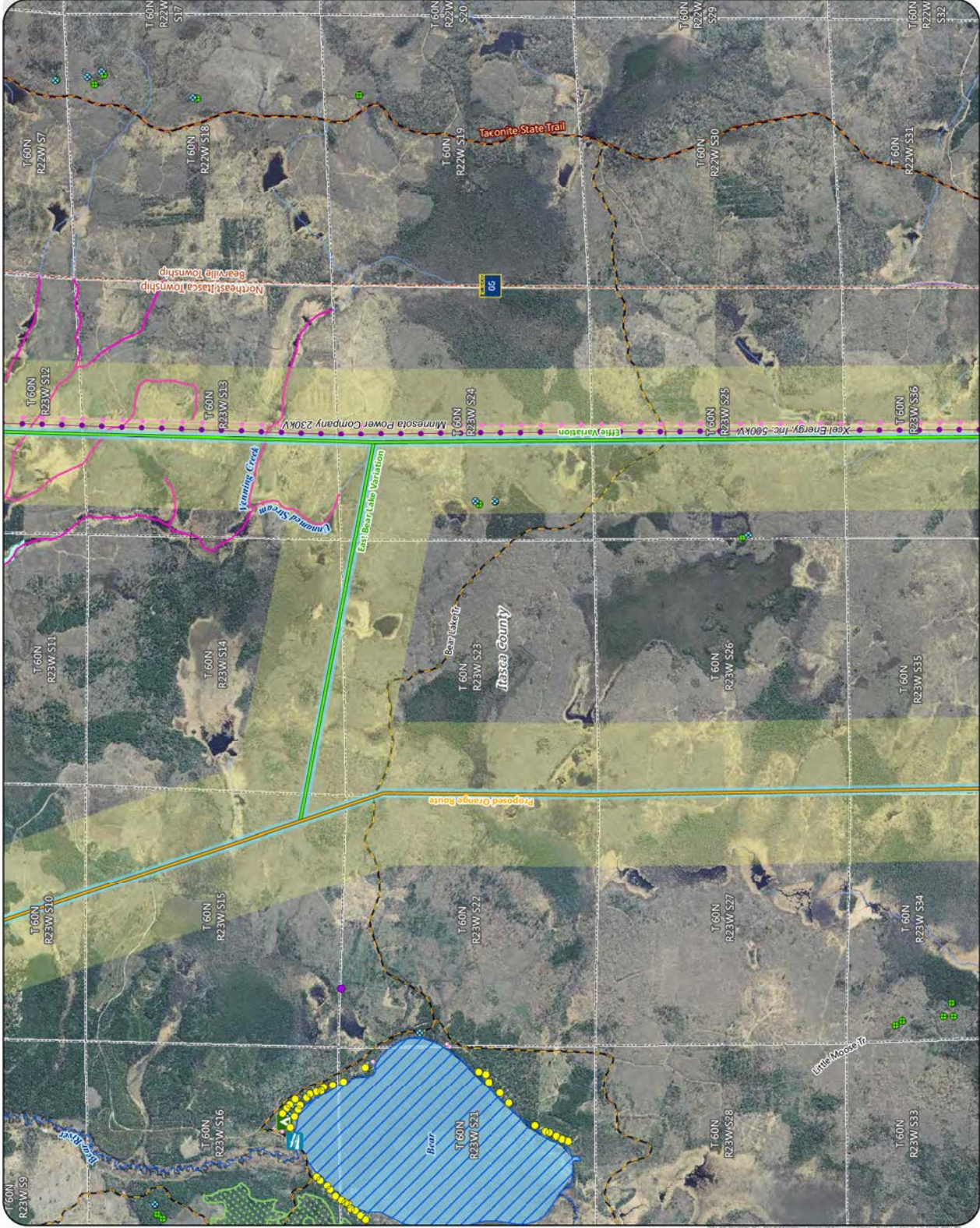


- Proposed Routes**
- Change Route
 - Alternatives
 - Route Variation
 - Anticipated Route Width
 - Anticipated Right-of-Way
 - Residences
 - Commercial or Non-Residential Structure
 - Aggregate Source Location
 - County Well Index
 - Mineral Exploration or Engineering Drillhole
 - State Forest Campground
 - Trailer Launch Water Access
 - NHD Watercourse
 - PMT Watercourse
 - Trout Stream
 - NHD Waterbody
 - PMT Waterbody
 - Aquatic Management Area
 - Ecologically Important Lowland Conifers
 - Snowmobile Trail
 - State Trail
 - Civil Township
 - Public Land Survey Section
 - MPCA Database
 - Multiple Activities
 - Existing Transmission Lines
 - 230 KV
 - 500 KV



Appendix S - Map 112

MAP BOOK - EAST SECTION
Great Northern Transmission Line
Final Environmental Impact Statement



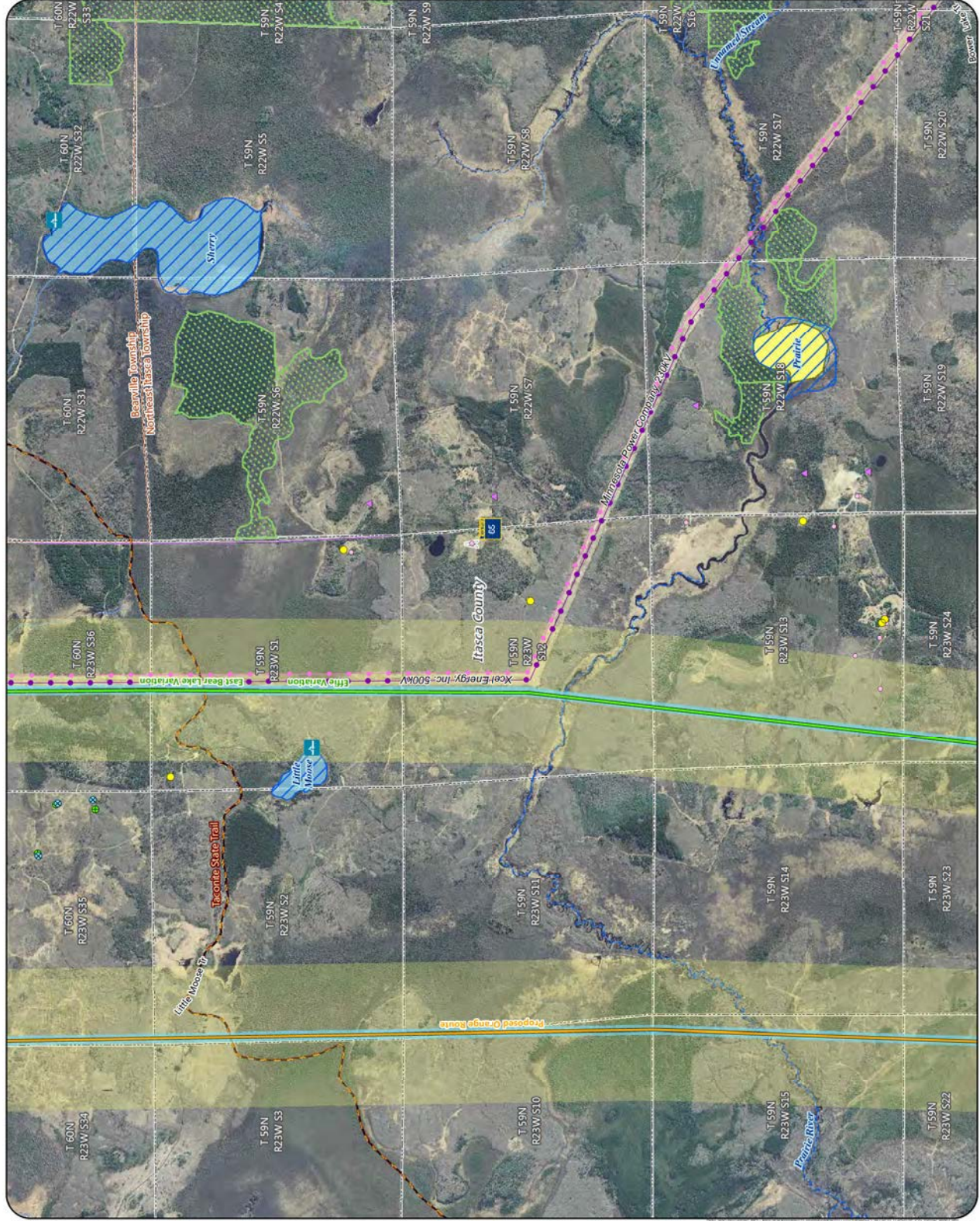


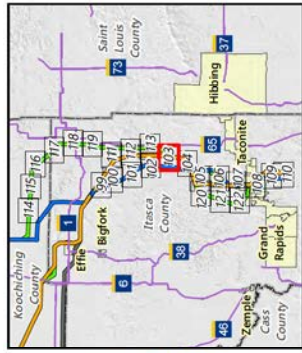
- Proposed Routes**
- Orange Route
 - Alternatives
 - Route Variation
 - Anticipated Route Width
 - Anticipated Right-of-Way
 - Residences
 - Commercial or Non-Residential Structure
 - Aggregate Source Location
 - Communication Tower
 - County Well Index
 - Mineral Exploration or Engineering Drillhole
 - Carry-in Water Access
 - NHD Watercourse
 - PMI Watercourse
 - NHD Waterbody
 - PMI Waterbody
 - Wild Rice Lake
 - Ecologically Important Lowland Conifers
 - Snowmobile Trail
 - State Trail
 - Civil Township
 - Public Land Survey Section
- Existing Transmission Lines**
- 230 kV
 - 500 kV



Appendix S - Map 113

MAP BOOK - EAST SECTION
Great Northern Transmission Line
Final Environmental Impact Statement



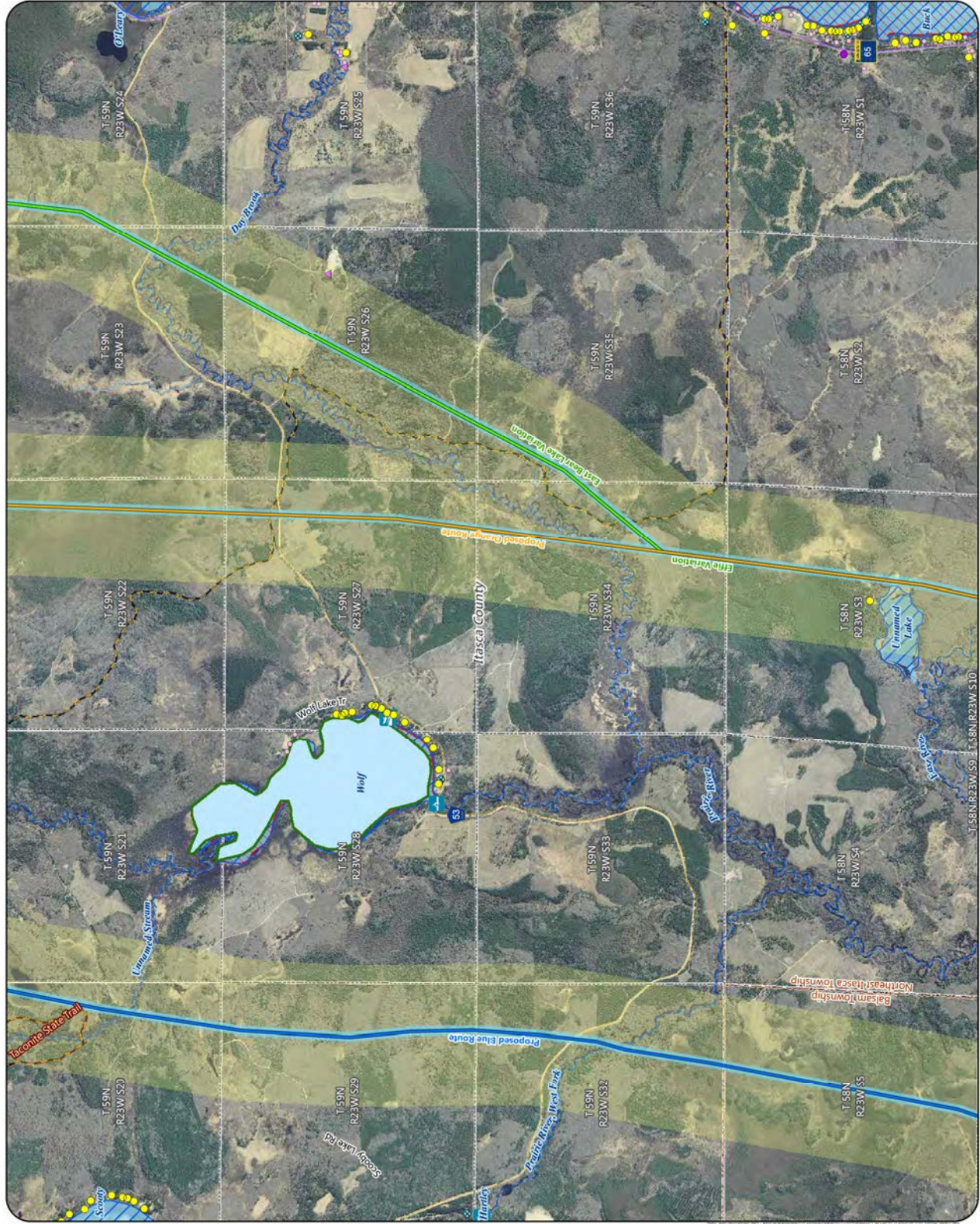


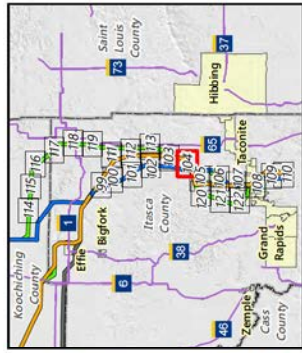
- Proposed Routes**
- Blue Route
 - Orange Route
- Alternatives**
- Route Variation
 - Anticipated Route Width
 - Anticipated Right-of-Way
- Residences**
- Commercial or Non-Residential Structure
 - Aggregate Source Location
 - County Well Index
 - Carry-in Water Access
 - Trailer Launch Water Access
 - NHD Watercourse
 - PMT Watercourse
 - NHD Waterbody
 - PMT Waterbody
 - MPCA Impaired Waterbody
 - Shallow Lake
 - Snowmobile Trail
 - State Trail
 - Civil Township
 - Public Land Survey Section
 - MPCA Database
 - Multiple Activities



Appendix S - Map 103

MAP BOOK - EAST SECTION
Great Northern Transmission Line
Final Environmental Impact Statement





- Proposed Routes**
- Blue Route
 - Orange Route
- Alternatives**
- Route Variation
 - Alignment Modification
 - Anticipated Route Width
 - Anticipated Right-of-Way
- Residences**
- Commercial or Non-Residential Structure
 - Aggregate Source Location
 - County Well Index
 - NHD Watercourse
 - PMI Watercourse
 - NHD Waterbody
 - PMI Waterbody
 - Wild Rice Lake
 - Shallow Lake
 - Snowmobile Trail
 - State Trail
 - Civil Township
- MPCA Database**
- Public Land Survey Section
 - Hazardous Waste



Appendix S - Map 104

MAP BOOK - EAST SECTION
Great Northern Transmission Line
Final Environmental Impact Statement

