

## A Word from Minnesota Power

Snow and cold temperatures are important for our construction team. Cold temperatures freeze the ground, which minimizes ground disturbance from heavy construction equipment. Our construction team continues installing foundations, setting structures, and stringing wire throughout the project area. Work also continues at the Iron Range Substation in Segment 4.

This winter, our project team presented to the Koochiching, Itasca, Lake of the Woods, and Roseau County Commissioner Boards. The Board members were pleased to hear that the project is on schedule and to date there have been minimal

issues. Continue reading to learn more about the construction progress and the County Commissioner Board presentations.

Thank you for your ongoing collaboration on this important project for Minnesota Power and our region. We always welcome suggestions for topics to include in future newsletters. Please use the project contact information to reach out if you have any questions.

- Jim Atkinson **Environmental & Real Estate Manager**



**Call the Project Hotline:**

877.657.9934



**Visit the Project Website:**

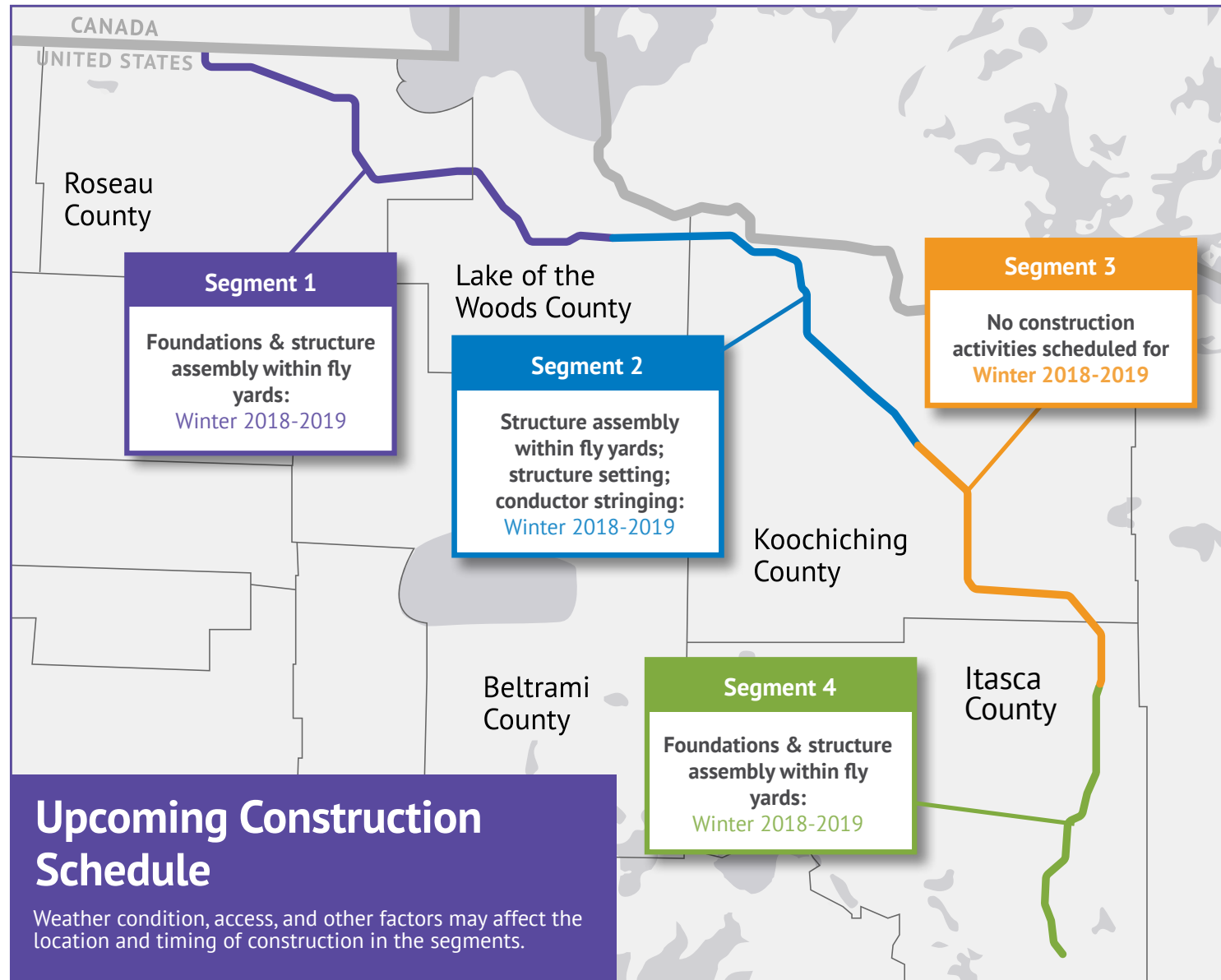
[GreatNorthernTransmissionLine.com](http://GreatNorthernTransmissionLine.com)



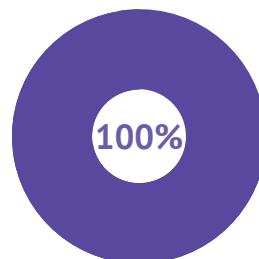
**Email the Project Team:**

[info@GreatNorthernTransmissionLine.com](mailto:info@GreatNorthernTransmissionLine.com)

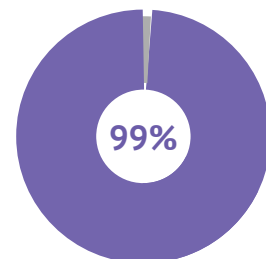
## Project Schedule & Construction Progress



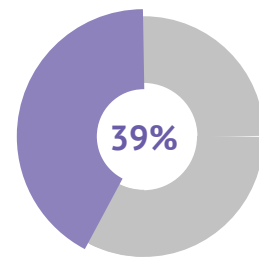
Clearing/  
Ground Surveys



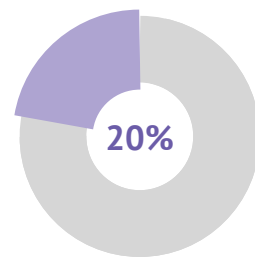
Foundations



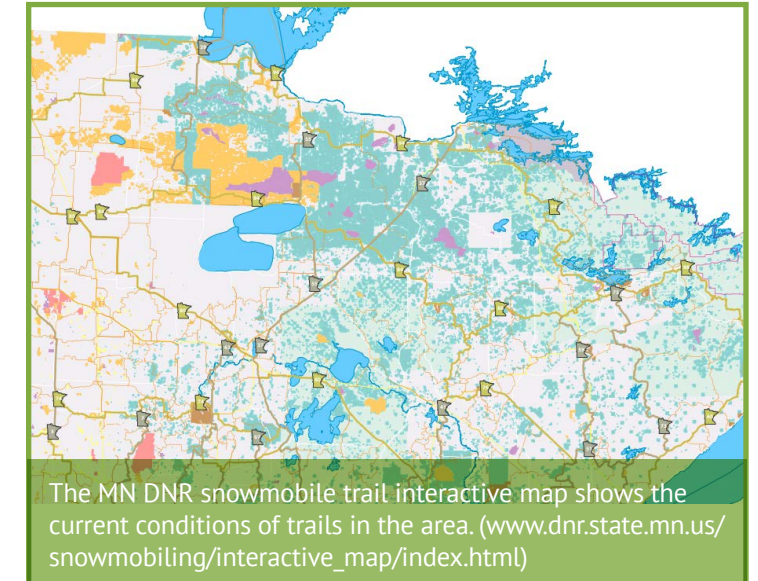
Structure  
Setting



Conductor  
Stringing



## Safety Spotlight: Snowmobile Trails



Safety is everyone's responsibility. We appreciate your role in helping to create a safe working environment for you and our construction crews.

Snowmobiling is one of Minnesota's most popular winter activities and safety is one of our biggest priorities.

- To ensure safety for you and our construction crews, don't approach an active construction site.
- Maintain distance between you and our crews.
- Approach trail-road intersections with caution as large vehicles may be transporting equipment.
- Trail users may see large equipment and trucks near the project area as we assemble structures, set up staging areas, and string conductor.
- Riders should maintain safe speeds through the construction areas.
- A four-inch base layer of snow (if there is enough snow) will be maintained on the trails where they intersect the project right-of-way and access.





- A Word from Minnesota Power
- Progress Update
- Construction Status
- Safety Spotlight
- County Board Presentations

## IN THIS ISSUE

AN ALLETE COMPANY  
 c/o HDR  
 701 Xenia Ave South, Suite 600  
 Minneapolis, MN 55416



## GREATNORTHERNnews

# Project Highlight: County Board Presentations

As part of our ongoing project communication program, members of our project team met with County Commissioner Board members this winter to give a status update. These presentations were specific to construction work completed, currently underway, and expected for 2019 within each County.

- Koochiching County – December 11, 2018
- Itasca County – December 4, 2018
- Lake of the Woods – December 11, 2018
- Roseau County – January 8, 2019

Our project team continues to keep community members and leaders engaged in the project. If you have questions, you are always welcome to contact our project team.

